



CLFP

2019 Accomplishment Report

IN THIS ISSUE

- 2 | 2019 Membership
- 7 | 2019 CLFP Celebration Day
- 11 | Exam Preparation
- 12 | Cindy Spurdle Award of Excellence
- 13 | 2020 Board of Directors
- 14 | Companies with 3 or More CLFPs
- 19 | New CLFPs and Associates
(since last publication)



2019 BOARD OF DIRECTORS

Andrew Eller, CLFP - President
First American Equipment Finance

Kevin Prykull, CLFP - Vice President
PNC Equipment Finance

Nathan Gibbons, CLFP - Secretary
Innovation Finance

Chris Enbom, CLFP - Treasurer
AP Equipment Financing

Marci Slagle, CLFP - Past President
36th Street Capital

Sudhir Amembal, CLFP
Amembal and Halladay

Todd Buzard, CPA, CLFP
First American Equipment Finance

Joe Leonard, CLFP
Oakmont Finance

Tamara McCourt, CCE, CLFP
LendSpark

Daniel Nelson, CLFP
Tamarack Consulting

Pete Sawyer, CLFP
Sun South Equipment Leasing

Jason Seitz, CLFP
BMO Harris Equipment Finance

Jenny Wood, CLFP
Orion First Financial

STAFF

Reid Raykovich, CLFP - Executive Director

Sandy Vigilia - Executive Administrator

Thank you to our supporting Associations.



2019 MEMBERSHIP

The CLFP Foundation membership increased 25% in 2019 with 297 individuals sitting for the exam – a 39% increase over 2018. At time of press, the Foundation has 861 CLFPs and Associates across the United States, Canada, Australia, and India. Following are the individuals who gained the designation in 2019:

Chris Ahn	DLL
Omar Ali	Partners Capital Group, Inc.
Ryan Anderson	Stearns Bank NA-Equipment Finance Division
Mitchel Anderson (CLFP Associate)	Stearns Bank NA-Equipment Finance Division
Margaret Aniceto (CLFP Associate)	AP Equipment Financing
Caprice Archer	Ascentium Capital LLC
Andrew Baccaro	Ascentium Capital LLC
Blake Bachelor (CLFP Associate)	Team Financial Group, Inc.
Emma Bambury	First American Equipment Finance, a City National Bank Company
Nate Bash	First American Equipment Finance, a City National Bank Company
Geoff Belt	Stryker
Kimberly Benson	Financial Pacific Leasing, Inc., an Umpqua Bank Company
Justin Berard	Amur Equipment Finance
Shannah Berger	FirstLease, Inc.
Amanda Bialka	Stearns Bank NA-Equipment Finance Division
Mario Bianchi (CLFP Associate)	Northpoint Commercial Credit, LLC
Jeff Bitzer	Integrated Financial Solutions
Cassie Blodgett (CLFP Associate)	Stryker
Chad Boivin	Beacon Funding Corporation
John Bortle	Amur Equipment Finance
Melissa Boyd	U.S. Bank Equipment Finance
Dawn Brouillet	Stearns Bank NA-Equipment Finance Division
Criss Brown	BB&T Commercial Equipment Capital Corp.
Katrina Bryson	DLL
Angie Burg	Stearns Bank NA-Equipment Finance Division
Rebecca Bylin	Financial Pacific Leasing, Inc., an Umpqua Bank Company
Chad Carlson	Tamarack Consulting, Inc.
Steve Caulder	International Decision Systems
Kyle Cerone	First American Equipment Finance, a City National Bank Company
Desiree Chackal	First American Equipment Finance, a City National Bank Company
Brian Chang (CLFP Associate)	First American Equipment Finance, a City National Bank Company
Rachel Chesley	Western Equipment Finance
Drew Christopher	Diorio Forest Products, Inc.
Andrew Clark	Laurentide Financial Services
Danielle Clawson	First American Equipment Finance, a City National Bank Company
Andre Clifford	Bryn Mawr Equipment Finance, Inc. dba Bryn Mawr Funding
Nathan Cmelik	Stearns Bank NA-Equipment Finance Division
Jerald Collens	Crossroads Equipment Lease & Finance LLC
Craig Colling	Ascentium Capital LLC
Jordan Cooper	First American Equipment Finance, a City National Bank Company
Karin Copeland	3M
Tony Corbett	DLL
Martin Cowie	FIS
Paul Crnkovic	Ascentium Capital LLC
Tricia Cruz	Ascentium Capital LLC
Anna Cuthbert	First American Equipment Finance, a City National Bank Company
Casey Cuthbert	First American Equipment Finance, a City National Bank Company
Ashley Davis	Ascentium Capital LLC
Brenda Denelsbeck	U.S. Bank Equipment Finance

Doug DiFilippo	DLL
Michele Lee Doherty	Canon Financial Services, Inc.
Parker Dood (CLFP Associate)	Stryker
Crystal Doro	First American Equipment Finance, a City National Bank Company
Heather Doyle	Financial Pacific Leasing, Inc., an Umpqua Bank Company
Adam Drill	K2 Capital Group
Katrina DuBois	AP Equipment Financing
Sichao E	ECS Financial Services, Inc.
Sean Eidle	Oakmont Capital Services, LLC
Mandy Eiyneck	Stearns Bank NA-Equipment Finance Division
Tracey Elfering	Oakmont Capital Services, LLC
Corey Elkins	Financial Pacific Leasing, Inc., an Umpqua Bank Company
Josh Ellison	Stearns Bank NA-Equipment Finance Division
Ron Elwood	Navitas Credit Corp.
Joel Emmett	International Decision Systems
Sarah Engdahl	Stearns Bank NA-Equipment Finance Division
Matt Enzwiler	Commerce Bank
Ann Erickson	Stearns Bank NA-Equipment Finance Division
Suzann Fakhoury	Crossroads Equipment Lease & Finance LLC
Becky Farmer	First American Equipment Finance, a City National Bank Company
Eric Felland	Stearns Bank NA-Equipment Finance Division
Clay Fischer	Sentry Bank
Andy Fishburn	Equipment Leasing and Finance Association
Jan Forgue	ECS Financial Services, Inc.
Erin Foster	Ascentium Capital LLC
Jen Foulds	Oakmont Capital Services, LLC
Roger Franco	Cisco Systems Capital Corporation
Joseph Frank	Stearns Bank NA-Equipment Finance Division
Ben Franzoso (CLFP Associate)	Amur Equipment Finance
Siyani Fullerton	First American Equipment Finance, a City National Bank Company
Jason Galaska	Amur Equipment Finance
Ed Gerek, Jr. (CLFP Associate)	Bryn Mawr Equipment Finance, Inc. dba Bryn Mawr Funding
Dustin Gibbs	AP Equipment Financing
Jon Gibbs	First American Equipment Finance, a City National Bank Company
Ryan Gilbert	First Foundation Bank
Brandon Gnecco (CLFP Associate)	Amur Equipment Finance
Sharon Goetz	KLC Financial, Inc.
Rick Gomba	Ascentium Capital LLC
Nerio Gonzalez Sanchez	Global Financial & Leasing Services LLC
Lovern Gordon	Boston Financial & Equity Corporation
Kim Gosal	Amur Equipment Finance
Whitney Gross	First American Equipment Finance, a City National Bank Company
Cindy Grover	Financial Pacific Leasing, Inc., an Umpqua Bank Company
Robert Harris	Wintrust Commercial Finance
Kash Hassan	First American Equipment Finance, a City National Bank Company
Eric Heft	U.S. Bank Equipment Finance
Jeff Heidman	Tamarack Consulting, Inc.
Dan Heim	BB&T Commercial Equipment Capital Corp.
Brian Hernandez	Ascentium Capital LLC
Tammy Heydt	BB&T Commercial Equipment Capital Corp.
Richard Hickmon	VFI Corporate Finance
Jake Hirsch (CLFP Associate)	AP Equipment Financing
Julie Hoffman	TriState Capital Bank
Crystal Hofmeyer	U.S. Bank Equipment Finance
Emily Hogan	First American Equipment Finance, a City National Bank Company
Chris Holdaway	BB&T Equipment Finance Corp.
Jason Holtz	Ascentium Capital LLC
Jordan Hopkins (CLFP Associate)	Stearns Bank NA-Equipment Finance Division
Adam Horsch	Stearns Bank NA-Equipment Finance Division
Hilary Hull	Amur Equipment Finance
Jason Hunter (CLFP Associate)	ECS Financial Services, Inc.

John Iacobacci	DLL
Justin Irons (CLFP Associate)	ECS Financial Services, Inc.
Theo Jacobs	Stearns Bank NA-Equipment Finance Division
Ben Jacobs	First American Equipment Finance, a City National Bank Company
Caroline Johnson	Stryker
Jeremy Johnson	DLL
Michael Jung (CLFP Associate)	Ascentium Capital LLC
Bill Kane (CLFP Associate)	First American Equipment Finance, a City National Bank Company
Nick Karlen (CLFP Associate)	BB&T Equipment Finance Corp.
Ken Karpel	Amur Equipment Finance
Nate Kary	Geneva Capital, LLC
Aaron Kaslow	Northpoint Commercial Credit, LLC
Dan Kats (CLFP Associate)	ECS Financial Services, Inc.
Melissa Kaul	U.S. Bank Equipment Finance
Lawrence Kellmayer	SANY Capital USA, Inc.
Debra Kemp	U.S. Bank Equipment Finance
Craig Kern	Stearns Bank NA-Equipment Finance Division
Jordanne Kissner (CLFP Associate)	Fafinski Mark & Johnson, P.A.
Dom Knight	Ascentium Capital LLC
Roderick Knoll (CLFP Associate)	Marathon Commercial Capital, LLC
Missy Koltes	Stearns Bank NA-Equipment Finance Division
Nick Konz	Northland Capital Financial Services, LLC
Jessica Kort (CLFP Associate)	Amur Equipment Finance
Sanzhar Kunayev	ConnectedFi
Tina Kurzhals (CLFP Associate)	Stearns Bank NA-Equipment Finance Division
Stephen LaMendola	Amur Equipment Finance
Rick Lang	First Midwest Equipment Finance Co.
Sam Lardi	Odessa
Sonja Legg	Financial Pacific Leasing, Inc., an Umpqua Bank Company
Yuman Li	ECS Financial Services, Inc.
Elise Linn	Oakmont Capital Services, LLC
Steve Lippa	First American Equipment Finance, a City National Bank Company
Wendy Locey	Stryker
Paige Luethmers (CLFP Associate)	Stearns Bank NA-Equipment Finance Division
Mindy Lund	Stearns Bank NA-Equipment Finance Division
Beth Maaske	Volvo Financial Services
Paul MacDonald	Ascentium Capital LLC
Adam Mancuso (CLFP Associate)	First American Equipment Finance, a City National Bank Company
Eric Mandella	Navitas Credit Corp
Stephen Marcucci (CLFP Associate)	Ascentium Capital LLC
Jennifer Marison	BB&T Commercial Equipment Capital Corp.
Joe Martinez III	Navitas Credit Corp.
Jodie Masciola	Wintrust Specialty Finance
Andrew Mayer	Tamarack Consulting, Inc.
Dan Mayo	Stryker
Maia McBurney (CLFP Associate)	International Decision Systems
Mike McDonald	Stryker
Michael McElroy	Oakmont Capital Services, LLC
Lance McKnight	BB&T Equipment Finance Corp.
Brent McWhorter	Amur Equipment Finance
Sean Meder	BciCapital, Inc.
Natalie Melhouse	International Decision Systems
Brittney Metzner	Ascentium Capital LLC
Dennis Miller	BB&T Commercial Equipment Capital Corp.
Julie Miller (CLFP Associate)	ConnectedFi
Kara Miyasato	Stryker
Amy Moffitt	First American Equipment Finance, a City National Bank Company
Kimberly Moore	First American Equipment Finance, a City National Bank Company
Evan Moreau (CLFP Associate)	AP Equipment Financing
Jena Morgan	KLC Financial, Inc.
Ramesh Muniappan	Odessa

Danielle Naylor	First American Equipment Finance, a City National Bank Company
Spring Nelson	Stearns Bank NA-Equipment Finance Division
Matt Nicholson	U.S. Bank Equipment Finance
Tatum Noreen	Stearns Bank NA-Equipment Finance Division
Justin Norris	First Utah Bank
Kevin O'Connor	Beacon Funding Corporation
Mark O'Gorden	Amur Equipment Finance
David Olson	International Decision Systems
Trent Olson	KLC Financial, Inc.
Katie O'Mara	FirstLease, Inc.
Jerome Orze, Jr. (CLFP Associate)	ECS Financial Services, Inc.
Ken Ouellette, Jr.	U.S. Bank Equipment Finance
Nathan Pearson	Stearns Bank NA-Equipment Finance Division
Melanie Pedersen	U.S. Bank Equipment Finance
Aaron Perry	Stryker
Randy Petersen	KLC Financial, Inc.
Kevin Peterson	Northpoint Commercial Credit, LLC
Karen Pomazal	First American Equipment Finance, a City National Bank Company
Lori Popp	Stearns Bank NA-Equipment Finance Division
Michael Prestoy (CLFP Associate)	Odessa
Tom Radcliff	Physicians Mutual Insurance Company
Jen Rakotz	Stearns Bank NA-Equipment Finance Division
Matt Rankin	First American Equipment Finance, a City National Bank Company
Erin Rasmus	KLC Financial, Inc.
Becky Ricci	DLL
Ray Ridge III	DLL
Ricky Rios, CFA	Commercial Equipment Finance, Inc.
Lee Ritter	Stryker
Ryan Rizzo	International Decision Systems
Vickii Robinson	Financial Pacific Leasing, Inc., an Umpqua Bank Company
Rob Rohner	Amur Equipment Finance
Wyman Rothanburg	Northland Capital Financial Services, LLC
Brent Russell	Bryn Mawr Equipment Finance, Inc. dba Bryn Mawr Funding
Jeff Saylor	First American Equipment Finance, a City National Bank Company
Cati Scheifele	DLL
Larry Scherzer	Cisco Systems Capital Corporation
Margaret Schmitt	International Decision Systems
Tracy Schneider	Stearns Bank NA-Equipment Finance Division
Zack Scribani	First American Equipment Finance, a City National Bank Company
Erin Secord	Stearns Bank NA-Equipment Finance Division
Don Segura	Amur Equipment Finance
Molly Simon	U.S. Bank Equipment Finance
Julian Sirull	Global Financial & Leasing Services LLC
Kelly Skalicky	Stearns Bank NA-Equipment Finance Division
Eli Skundric	Amur Equipment Finance
Laura Smith	Stearns Bank NA-Equipment Finance Division
Marietta Smith	First American Equipment Finance, a City National Bank Company
Rico Sondakh-Dorantes	UniFi Equipment Finance, Inc.
Brett Spurlock	Arvest Equipment Finance
Delroy Stauffer	Odessa
Jen Steichen	Stearns Bank NA-Equipment Finance Division
Anthony Stein	Ascentium Capital LLC
Mark Stephany	First American Equipment Finance, a City National Bank Company
Jen Stich	Stearns Bank NA-Equipment Finance Division
Marilyn Tacka	BB&T Equipment Finance Corp.
Shrirang Tambe	Origa Lease Finance Pvt Ltd, India
Maggie Terres	Stearns Bank NA-Equipment Finance Division
Jacki Thielen	Stearns Bank NA-Equipment Finance Division
Stacey Thompson	First Foundation Bank
Will Thomsen	Better Business Funding, LLC
Christopher Tokin	Financial Pacific Leasing, Inc., an Umpqua Bank Company

Amanda Town
 Joan Twigg
 Meredith Ulrich
 Matt Vazzana
 Brian Vogel
 Skii VonDracek
 Missy Vos
 Taka Wada
 Gordon Walker
 Scott Wall
 Nate Wallenhorst
 Eric Wanberg
 Bobbie Warner
 Cameron Watten
 Gina Weismann
 Ann Wendling
 Steph Wentland
 Will Whelan
 Garrett Wilhite (CLFP Associate)
 Valerie Wood
 Chelsea Wood Thurn
 Luanne Woods
 Amanda Zeken
 Kara Ziegler
 Christa Zodda

Oakmont Capital Services, LLC
 Univest Capital, Inc.
 Stearns Bank NA-Equipment Finance Division
 Huntington Technology Finance
 Stearns Bank NA-Equipment Finance Division
 U.S. Bank Equipment Finance
 Stearns Bank NA-Equipment Finance Division
 Amur Equipment Finance
 DLL
 International Decision Systems
 First American Equipment Finance, a City National Bank Company
 AP Equipment Financing
 Odessa
 Amur Equipment Finance
 TD Equipment Finance, Inc.
 Odessa
 Stearns Bank NA-Equipment Finance Division
 International Decision Systems
 ECS Financial Services, Inc.
 Amur Equipment Finance
 Wintrust Specialty Finance
 UniFi Equipment Finance, Inc.
 Smarter Equipment Finance, LLC
 ECS Financial Services, Inc.
 Canon Financial Services, Inc.

YOUR LEASE PORTFOLIO, EXPERTLY MANAGED

ECS
financial services

Services to Help Your Business

- Lease Portfolio Management
- Income Tax and Accounting Services
- Advisory Services
- Sales/Use Tax Consulting, Compliance, and Registration
- Personal Property Tax Compliance
- 10 CLFPs on Staff

800.826.7070
 Nancy Geary, CPA, CLFP
 Shari Lipski, CLFP
 Visit: ecsfinancial.com/clfp

FP Financial Pacific Leasing

BIG or small, we can handle it
 Transactions \$5,000 - \$500,000
 800.447.7107 | www.finpac.com

CLFP
 Certified Lease Finance Professional

Pleased to support the CLFP Foundation

Financial Pacific Leasing, Inc. is a subsidiary of Umpqua Bank
 Products offered by Financial Pacific Leasing are not FDIC insured.

2019 CLFP CELEBRATION WEEK

The Foundation extended the CLFP Celebration Day to a Celebration Week. CLFPs and Associates gathered across the country in fifteen different cities including, Chicago, IL; Fort Smith, AR; Grand Island, NE; Milwaukee, WI; Devils Lake, ND; Philadelphia, PA; Portland, OR; Rochester, NY; San Francisco, CA; Scottsdale, AZ; Seattle, WA; Tustin, CA; St. Cloud, MN; Knoxville, TN; and Houston, TX.

SEATTLE, WA



FORT SMITH, AR



ST. CLOUD, MN



TUSTIN, CA



2019 CLFP CELEBRATION WEEK

PHILADELPHIA, PA



CHICAGO, IL



SCOTTSDALE, AZ



DEVILS LAKE, ND



2019 CLFP CELEBRATION WEEK

PACIFIC NORTHWEST + SOUTHERN CALIFORNIA



KNOXVILLE, TN



MILWAUKEE, WI



SAN FRANCISCO, CA



GRAND ISLAND, NE



2019 CLFP CELEBRATION WEEK

ROCHESTER, NY



PORTLAND, OR



ROCHESTER, NY



JOB SEARCHING CLFP? DON'T FORGET TO CHECK ORION FIRST!

At its core, Orion is a manager of risk - so if you're looking to make a low-risk, high-reward career decision visit orionfirst.com/careers for current job openings.

SERVING THOSE WHO
FUND SMALL BUSINESS



Proud Supporter of
the CLFP Foundation

www.fauf.com



Integrity + Smarts

EXAM PREPARATION

The CLFP Foundation continued facilitating the Academy for Lease & Finance Professionals (ALFP) in 2019 and held 14 Academies (6 private and 8 public). Below are those CLFPs who graciously volunteered their time to lead a subject (or several), and/or proctor.

Stacey Allen, CLFP
Derek Anniston, CLFP
Robin Cook, CLFP
Anne Dalgaard, CLFP
Kathy Dapcic, CLFP
Nick Fong, CLFP
Michelle Fuchs, CLFP
Michael Green, CLFP
Judi Jenks, CLFP
Terey Jennings, CLFP
Bette Kerhoulas, CLFP
Kristie Kosobuski, CLFP
Christy Kusilek, CLFP
Joe Leonard, CLFP
Chris Maudlin, CLFP
Mike McDonald, CLFP
Mark McKissick, CLFP

Jill Molitor, CLFP
Sinead Murphy, CLFP
David Normandin, CLFP
Daniel Nelson, CLFP
Jim Peach, CLFP
Nate Pfeifer, CLFP
Shervin Rashti, CLFP
Candace Reinhart, CLFP
Deb Reuben, CLFP
Delroy Stauffer, CLFP
Jen Stich, CLFP
Lia Wax, CLFP
Christine Williams, CLFP
Lisa Whitehead, CLFP
Tobey Wilson, CLFP
Laura Witow, CLFP

We would also like to thank all of the hosts who made each ALFP a success!



CINDY SPURDLE

Award of Excellence



The 2019 Cindy Spurdle Award of Excellence was presented to Rob Boyer, CLFP by Reid Raykovich, CLFP at the NEFA Fall Funding Symposium. He was nominated by his peers and the Board of Directors made a final selection as the CLFP who has contributed most to the industry and best represents the CLFP ideals for the year.

Kevin Prykull, CLFP, Vice President of the CLFP Board of Directors states, “The Cindy Spurdle Award of Excellence is befitting for Rob who provides ongoing commitment and service to the CLFP certification, our Foundation, and the equipment finance and leasing industry. I have had the opportunity to work directly with Rob on the CLFP Board over the last couple of years. His insights, leadership and thoughtfulness helped propel the exam, certification and our Foundation to new heights. Rob clearly makes a difference, akin to the excellence of Cindy Spurdle for which this award is in honor. Rob is a consummate professional and represents the CLFP in the very best light.”

“It is truly a great honor to be recognized by the CLFP Foundation for the work that I did while a member of the Foundation’s Board of Directors,” said Rob Boyer. “The CLFP Foundation is unique in the sense that it works to build a better industry by its focus on developing enhanced knowledge and ethical conduct at the individual professional level. I found the CLFP’s mission and purpose very compelling and I am happy that I was able to have a positive impact on its growth and development.”

2020 CLFP BOARD OF DIRECTORS



SUDHIR AMEMBAL, CLFP
Amembal & Halladay



TAMARA MCCOURT, CCE, CLFP
LendSpark



PETE SAWYER, CLFP
Sun South Equipment Leasing



TODD BUZARD, CPA, CLFP
First American Equipment Finance



DANIEL NELSON, CLFP
Tamarack Consulting



JASON SEITZ, CLFP
BMO Harris Equipment Finance



ANDREW ELLER, CLFP
First American Equipment Finance



KATHY NORDENDAHL, CLFP
Dedicated Funding



LIA WAX, CLFP
Financial Pacific Leasing



NATE GIBBONS, CLFP
Innovation Finance



KEVIN PRYKULL, CLFP
PNC Equipment Finance



JENNY WOOD, CLFP
Orion First Financial



JOE LEONARD, CLFP
Oakmont Capital Services



NICK ROSS, CLFP
Western Equipment Finance

The Foundation would especially like to thank those who served on the Board of Directors in 2019 and will not be returning.



CHRIS ENBOM, CLFP
who served for four years



MARCI SLAGLE, CLFP
who served for five years

COMPANIES WITH 3 OR MORE CLFPS

2019 RANK	2018 RANK	COMPANY	2019 COUNT	2018 COUNT	CHANGE
1	1	First American Equipment Finance, a City National Bank Company	124	109	12%
2	n/a	Stearns Bank NA-Equipment Finance Division*	39	1	97%
3	6	Amur Equipment Finance	33	16	52%
3	2	Financial Pacific Leasing, Inc., an Umpqua Bank Company	33	24	27%
5	4	Ascentium Capital LLC	32	18	44%
6	4	BB&T Commercial Equipment Capital Corp.	26	18	31%
6	5	U.S. Bank Equipment Finance	26	17	35%
8	3	AP Equipment Financing	24	19	21%
9	7	ECS Financial Services, Inc.	18	12	33%
10	12	DLL	14	4	71%
10	9	KLC Financial, Inc.	14	9	36%
12	10	Oakmont Capital Services, LLC	13	8	38%
13	14	International Decision Systems	12	3	75%
13	7	Ivory Consulting Corporation	12	12	0%
13	n/a	Stryker*	12	2	83%
16	8	Arvest Equipment Finance	11	10	9%
16	8	Canon Financial Services, Inc.	11	10	9%
18	8	Orion First Financial LLC	10	10	0%
19	9	BMO Harris Equipment Finance Company	9	9	0%
19	8	Great American Insurance	9	10	-11%
19	10	Northland Capital Financial Services, LLC	9	8	11%
19	14	Wintrust Capital	9	3	67%
23	9	BancorpSouth Equipment Finance	8	9	-13%
24	10	Beacon Funding Corporation	7	8	-14%
24	10	Celtic Commercial Finance	7	8	-14%
24	14	Odessa	7	3	57%
24	12	Tamarack Consulting, Inc.	7	4	43%
28	10	The Huntington National Bank	6	8	-33%
29	12	Commerce Bank	5	4	20%
29	14	First Foundation Bank	5	3	40%
29	11	GreatAmerica Financial Services	5	6	-20%
32	12	Bank of the West	4	4	0%
32	11	Marlin Capital Solutions	4	6	-50%
32	12	NCMIC Finance Corporation	4	4	0%
32	12	Partners Capital Group, Inc.	4	4	0%
32	14	UniFi Equipment Finance, Inc.	4	3	25%
37	13	Alliance Funding Group	3	3	0%
37	n/a	Bryn Mawr Equipment Finance, Inc. dba Bryn Mawr Funding*	3	1	67%
37	14	BSB Leasing, Inc.	3	3	0%
37	14	First National Capital Corporation	3	3	0%

*Denotes companies not on the 2018 list

COMPANIES WITH 3 OR MORE CLFPS

37	n/a	FirstLease, Inc.*	3	1	67%
37	n/a	FSG Capital, Inc.*	3	3	0%
37	n/a	Global Financial & Leasing Services LLC*	3	1	67%
37	12	Hanmi Bank	3	4	-33%
37	14	Key Equipment Finance	3	3	0%
37	14	LTI Technology Solutions	3	3	0%
37	n/a	Navitas Credit Corp.*	3	0	100%
37	n/a	Northpoint Commercial Credit, LLC*	3	0	100%
37	14	Providence Capital Funding, Inc.	3	3	0%
37	14	Quality Leasing Co., Inc.	3	3	0%
37	n/a	Taycor Financial*	3	2	33%
37	14	Western Equipment Finance	3	3	0%

*Denotes companies not on the 2018 list

CUSTOMIZED FUNDING PROGRAMS

by Hanmi Commercial Equipment Leasing



Bank on Your Dreams



LEAS^eTEAM

**The
SAME
GREAT**

People
Values
Service
Vision
Solution

With a **NEW** Look!



LTI's ASPIRE™, a comprehensive equipment finance platform that empowers you to effectively scale your business.

Thank you to our 2019 corporate partners

PLATINUM

*ECS Financial Services
Financial Pacific Leasing
First American Equipment
Finance
Hanmi Bank
LeaseTeam, Inc.
Orion First Financial*

GOLD

AP Equipment Financing

BRONZE

*AACFB
Amur Equipment Finance
Arvest Equipment Finance
Ivory Consulting Corporation
Pawnee Leasing Corporation
Portfolio Financial Servicing
Company*

Thank you to our 2019 personal partners

BENEFACTOR (\$250+)

*Alliance Capital Corporation
Sudhir Amembal, CLFP
Rob Boyer, CLFP
Donnie Bunn, CLFP
Mike Coon, CLFP
Jeff Elliott, CLFP
Paul Fogle, CLFP*

*Rick Galtelli, CLFP
Lisa Genereux, CLFP
Jaimie Haver, CLFP
Jaime Kaneshina, BPB, CLFP
Kevin Prykull, CLFP
Reid Raykovich, CLFP
Candace Reinhart, CLFP*

*Deb Reuben, CLFP
Pete Sawyer, CLFP
Dave Schaefer, CLFP
Marci Slagle, CLFP
Amy Spragg, CLFP
Don Wampler III, CLFP*

SPONSOR (\$100-\$249)

*Teresa Billick, CLFP
Chris Enbom, CLFP
Michael Green, CLFP
Steve Hanneman, CLFP
Jack Harvey, CLFP*

*Daniel Nelson, CLFP
Andrew Nere, CLFP
Drew Olynick, CLFP
Mae Philpott, CLFP
John Rosenlund, CLFP*

*Colin Rosenmeyer, CLFP
Guy Selinka, CLFP
Chris Williams, CLFP*

SUPPORTER (\$50-\$99)

*Bill Banfield, CLFP
Bud Callahan, CLFP
Kevin Canepa, CLFP
Joe Franco, CLFP
Chris Freds, CLFP*

*Ron Gonzales, CLFP
Paul Knowlton, CLFP
Kristie Kosobuski, CLFP
Ray Lavin, CLFP
Brian Link, CLFP*

*Richard Padgett, CLFP
Ignacio Sanchez, CLFP
Dave Verkinderen, CLFP*

CONTRIBUTOR (\$25-\$49)

*Leslie Brown, CLFP
Kirstin Elmer, CLFP
Jed Evans, CLFP
Katharine Harris, CLFP*

*Michael Kianmahd, CLFP
Cate McDonald, CLFP
Kathy Nordendahl, CLFP
Patrick O'Connor, CLFP*

*Shervin Rashti, CLFP
Kendra Rothschild, CLFP*

NEW CLFPS AND ASSOCIATES

since last publication



CHRIS AHN, CLFP
DLL



CHAD CARLSON, CLFP
Tamarack Consulting, Inc.



DOUG DIFILIPPO, CLFP
DLL



BLAKE BACHELOR, ASSOCIATE
Team Financial Group, Inc.



STEVEN CAULDER, CLFP
International Decision Systems



MICHELE LEE DOHERTY, CLFP
Canon Financial Services, Inc.



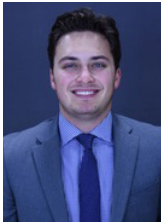
SHANNAH BERGER, CLFP
FirstLease, Inc.



ANDREW CLARK, CLFP
Laurentide



ADAM DRILL, CLFP
K2 Capital Group



MARIO BIANCHI, ASSOCIATE
Northpoint Commercial Credit, LLC



ANTHONY CORBETT, CLFP
DLL



RONALD ELMWOOD, CLFP
Navitas Credit Corp.



JEFFREY BITZER, CLFP
Integrated Financial Solutions



MARTIN COWIE
FIS



JOEL EMMETT, CLFP
International Decision Systems



CRISS BROWN, CLFP
BB&T Commercial Equipment Capital Corp.



PAUL CRNKOVIC, CLFP
Ascentium Capital LLC



MATTHEW ENZWILER, CLFP
Commerce Bank



KATRINA BRYSON, CLFP
DLL



PATRICIA CRUZ, CLFP
Ascentium Capital LLC



ANDY FISHBURN, CLFP
Equipment Leasing and Finance Association



ERIN FOSTER, CLFP
Ascentium Capital LLC



JOHN IACOBACCI, CLFP
DLL



ANDREW MAYER, CLFP
Tamarack Consulting, Inc.



**EDWARD GEREK, JR., ASSO-
CIATE**
*Bryn Mawr Equipment Finance,
Inc. dba Bryn Mawr Funding*



JEREMY JOHNSON, CLFP
DLL



**MAIA MCBURNEY,
ASSOCIATE**
International Decision Systems



SHARON GOETZ, CLFP
KLC Financial, Inc.



**NICHOLAS KARLEN,
ASSOCIATE**
BB&T Equipment Finance Corp.



LANCE MCKNIGHT, CLFP
BB&T Equipment Finance Corp.



JEFFREY HEIDMAN, CLFP
Tamarack Consulting, Inc.



AARON KASLOW, CLFP
*Northpoint Commercial Credit,
LLC*



NATALIE MELHOUSE, CLFP
International Decision Systems



DANIEL HEIM, CLFP
*BB&T Commercial Equipment
Capital Corp.*



**LAWRENCE KELLMAYER,
CLFP**
SANY Capital USA, Inc.



DENNIS MILLER, CLFP
*BB&T Commercial Equipment
Capital Corp.*



TAMMY HEYDT, CLFP
*BB&T Commercial Equipment
Capital Corp.*



ERIC MANDELLA, CLFP
Navitas Credit Corp.



RAMESH MUNIAPPAN, CLFP
Odessa



**CHRISTOPHER HOLDAWAY,
CLFP**
BB&T Equipment Finance Corp.



JOSEPH MARTINEZ III, CLFP
Navitas Credit Corp.



KATIE O'MARA, CLFP
FirstLease, Inc.



DAVID OLSON, CLFP
International Decision Systems



RICARDO RIOS, CLFP
*Commercial Equipment Finance,
Inc.*



SHRIRANG TAMBE, CLFP
*Origa Lease Finance Pvt Ltd,
India*



TRENTON OLSON, CLFP
KLC Financial, Inc.



RYAN RIZZO, CLFP
International Decision Systems



JOAN TWIGG
Univest Capital, Inc.



KEVIN PETERSON, CLFP
Northpoint Commercial Credit, LLC



BRENTON RUSSELL, CLFP
Bryn Mawr Equipment Finance, Inc. dba Bryn Mawr Funding



MATTHEW VAZZANA, CLFP
Huntington Technology Finance



MICHAEL PRESTOY, ASSOCIATE
Odessa



CATI SCHEIFELE, CLFP
DLL



GORDON WALKER, CLFP
DLL



ERIN RASMUS, CLFP
KLC Financial, Inc.



MARGARET SCHMITT, CLFP
International Decision Systems



SCOTT WALL, CLFP
International Decision Systems



REBECCA RICCI, CLFP
DLL



ELI SKUNDRIC, CLFP
Amur Equipment Finance



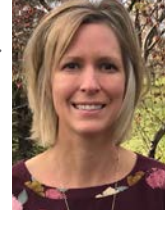
BOBBIE WARNER, CLFP
Odessa



RAYMOND RIDGE, CLFP
DLL



MARILYN TACKA, CLFP
BB&T Equipment Finance Corp.



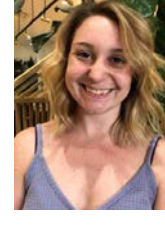
ANN WENDLING, CLFP
Odessa



GINA WEISMANN, CLFP
TD Equipment Finance, Inc.



WILLIAM WHELAN, CLFP
International Decision Systems



AMANDA ZEKEN, CLFP
Smarter Equipment Finance, LLC