



CLFP

2020 Accomplishment Report

IN THIS ISSUE

- 2 | A Message from the President
- 3 | 2020 Membership
- 6 | 2020 CLFP Celebration Day
- 7 | ALFP 2020 Recap
- 8 | Cindy Spurdle Award of Excellence
- 9 | 2021 CLFP Board of Directors
- 10 | New CLFPs and Associates
- 12 | Companies with 3 or More CLFPs
- 14 | Thank You to our Partners



BOARD OF DIRECTORS

Kevin Prykull, CLFP - President
Retired

Nathan Gibbons, CLFP - Vice President
Innovation Finance

Jenny Wood, CLFP - Secretary
Orion First Financial

Todd Buzard, CPA, CLFP - Treasurer
First American Equipment Finance

Andrew Eller, CLFP - Past President
First American Equipment Finance

Sudhir Amembal, CLFP
Amembal and Halladay

Joe Leonard, CLFP
Oakmont Finance

Tamara McCourt, CCE, CLFP
LendSpark

Daniel Nelson, CLFP
Tamarack Consulting

Kathy Nordendahl, CLFP
Dedicated Funding

Nick Ross, CLFP
Western Equipment Finance

Pete Sawyer, CLFP
Sun South Equipment Leasing

Jason Seitz, CLFP
BMO Harris Equipment Finance

Lia Wax, CLFP
Financial Pacific Leasing

STAFF

Reid Raykovich, CLFP - Executive Director
Sandy Vigilia - Executive Administrator

Thank you to our supporting Associations.



A MESSAGE FROM THE CLFP PRESIDENT

Greetings,

Seasons change. My backyard wildlife is well prepared for winter. The turkeys made it unharmed past Thanksgiving, the squirrels have gathered plenty of acorns and the deer blend ever so well into the trees. On a personal note, after over 30 years with PNC Equipment Finance Company in Pittsburgh (and over 42 years within the equipment finance and leasing industry) -- I recently retired from PNC. However, I intend to stay active and engaged within our industry, especially with the CLFP Foundation. As the song Hotel California by the Eagles say, "You can check out any time you like -- but you can never leave!!" I still love this business after 40+ years.

This will also be my last letter to you as President of the CLFP Foundation. I will be turning over my responsibilities to Nathan Gibbons at QuickFi at our January Board meeting. I wish Nate the very best as my successor. I will remain on the Board as Immediate Past President.

I think you will agree that 2020 is not what one would characterize as a "typical" year. No amount of planning could anticipate something like COVID-19 and its impact on our personal lives and families, our industry, economy, nation, world, work, and home. And yet during a year of pandemic and adversity, your CLFP Foundation turned "lemons into lemonade." We made a quick pivot to virtual academies and to online testing as a way to deliver our product to all of you and to potential CLFP candidates. Results have been outstanding, and we will continue to utilize both formats into the future. Don't worry. We have not abandoned traditional in-person instruction for our academies, which will resume when warranted.

Your Board successfully operates as a "Working" Board which oversees a committee style framework. All Board members and committee members are highly engaged and motivated to move the Foundation forward. Despite the pandemic, Committee and Board members worked diligently throughout the year to achieve results. We really did not miss a beat on any of our key initiatives. I want

to personally thank each and every Board and Committee member for their dedication and commitment to the CLFP Foundation and the CLFP designation.

We are rapidly approaching our "1000th " CLFP!! Who will it be? When will it be?? Stay tuned. It is not just important that we Increase the number of CLFPs, but it is essential that we retain a significant number of you as you take the recertification exam. We have a very high retention rate. It is paramount that we accentuate the superior quality and recognition that a CLFP offers to an employer and the ongoing value of the CLFP designation to you. So, I thank each of you for adhering to the high standards of professionalism and ethics as a CLFP and for your ongoing support.

Finally I would be remiss in not thanking Reid Raykovich our Executive Director and Sandy Vigilia, our administrative support, for their outstanding dedication and ongoing superior performance. They espouse the virtues of the CLFP designation and Foundation. Reid has a way to make things look "so" easy.

Enough for now. Best to all of you in 2021.



Kevin P. Prykull

Kevin Prykull, CLFP - President of the CLFP Foundation Board of Directors

2020 MEMBERSHIP

Despite the global pandemic, the Foundation is proud to announce that 154 individuals passed the CLFP exam in 2020. Following are the individuals who gained the designation in 2020 bringing the total CLFPs and Associate for the year to 974!

Kawika Ahquin, CLFP
Amanda Albertsson, CLFP
Vanessa Andel, CLFP
Marc Angel, CLFP
John Antoon, CLFP
Christy Bader, CLFP
Christopher Bakos, CLFP
CJ Baltali, CLFP
Jay Bankston, CLFP
Matt Barret, Associate
Russell Bass, CLFP
Andrew Belliveau, CLFP
Mark Bemenderfer, CLFP
Abigail Betz, CLFP
Brett Blankenship, CLFP
Lauren Blowers, CLFP
Jeremiah Branham, CLFP
Heather Broadwell, Associate
Kirk Browning, CLFP
Bruno Camara, CLFP
Michelle Castor, CLFP
Frederick Clauhs, CLFP
Alexis Clayton, CLFP
Nina Cole, CLFP
Anita Colvin, CLFP
Jose Cortez, CLFP
Katie Crawford, CLFP
Christopher Crespo, Associate
Christopher Dat Tan Tram, CLFP
Jessica Davila-Jasso, CLFP
Matthew de Aguiar, Associate
Jennifer Dirkes, CLFP
J. Patrick Doud, CLFP
Daniel Dudley, CLFP
Griffin Dulligan, CLFP
Christine Durfee, CLFP
Regina Eckendorf, CLFP
Jennifer Eckert, CLFP
Betsy Egeberg, Associate
Maria Ehlers, Associate
Jamie Engle, CLFP
Dennis Fitzgerald, CLFP
Gillian Foster, Associate
Scott Fry, CLFP
Jayne Gerads, CLFP
Joseph Guage, CLFP
Keith Hachey, CLFP
Benjamin Hall, CLFP
Amy Hall, CLFP

Global Lending Services LLC
Fernwood Capital & Leasing
Commercial Fleet Financing, Inc.
Stryker
1st Source Bank
1st Source Bank
Univest Capital, Inc.
Fleet Advantage, LLC
Arvest Equipment Finance
First American Equipment Finance, a City National Bank Company
Ivory Consulting Corporation
CIT
1st Source Bank
Navitas Credit Corp.
LTi Technology Solutions
First American Equipment Finance, a City National Bank Company
Key Equipment Finance
CoreTech Leasing, Inc.
1st Source Bank
Cisco Systems Capital Corporation
U.S. Bank Equipment Finance
Ascentium Capital LLC
First American Equipment Finance, a City National Bank Company
Key Equipment Finance
U.S. Bank Equipment Finance
CoreTech Leasing, Inc.
Arvest Equipment Finance
Balboa Capital Corporation
Ascentium Capital LLC
Ascentium Capital LLC
Fleet Advantage, LLC
Oakmont Capital Services, LLC
Zions Equipment Finance
Odessa
North Mill Equipment Finance
First American Equipment Finance, a City National Bank Company
U.S. Bank Equipment Finance
Key Equipment Finance
AP Equipment Financing
American Equipment Financial Services
First American Equipment Finance, a City National Bank Company
Ascentium Capital LLC
First American Equipment Finance, a City National Bank Company
Global Financial & Leasing Services LLC
Oakmont Capital Services, LLC
First American Equipment Finance, a City National Bank Company
Ascentium Capital LLC
Key Equipment Finance
CoreTech Leasing, Inc.

Cheryl Hanson, CLFP
Lisa Hartley, CLFP
Leslie Harty, CLFP
Kacie Haugen, CLFP
Carolyn Hayes, CLFP
Abraham Hernandez, Associate
Ryan Hinton, CLFP
Robert Hoffkins, CLFP
Brian Holland, CLFP
Sandra Hora, CLFP
Nicholas Housewright, CLFP
Joshua Huyck, CLFP
Scott Jacewicz-O'Kelly, CLFP
Jacquelyn Jacobs, Associate
Derek Johnson, CLFP
Christopher Johnson, CLFP
Austin Johnson, CLFP
Eric Johnston, CLFP
Katie Jones, CLFP
Bijo Joseph, CLFP
Garrett Kautz, CLFP
Danuta Kawecki, Associate
Timothy Kehoe, CLFP
Brian Kemp, CLFP
Kimberly King, CLFP
Timothy Kinney, CLFP
Amber Kodet, CLFP
Stephanie Kouloumberis, CLFP
Trace LaBarr, CLFP
Leonard Lane, CLFP
Ryan Larsen, CLFP
Jendaleigh Lathrop, CLFP
Ryan, Ledden CLFP
Christina Lee, CLFP
Isaac Leman, CLFP
Andrew Lepley, CLFP
Katie Lewis, Associate
Chunan Liu, Associate
Karen Gutierrez, Associate
Albino Lopez, Jr., CLFP
Ryan Magee, CLFP
John Marshall, CLFP
Joseph McClintock, CLFP
Timothy McConnell, CLFP
Justin McIntyre, Associate
Connor McKeeve, CLFP
Conor McKenna, CLFP
Nicole Miller, CLFP
Cori Miller, Associate
Jackie Moore, CLFP
Katharine Morris, CLFP
David Mullin, CLFP
Cody Nestor, CLFP
Tony Obringer, CLFP
Rosalynn Ostler, CLFP
Clark Parker, CLFP
Matthew Peters, CLFP
Jason, Peterson CLFP
Shelley Peterson, Associate
Lucas Pick, CLFP
Chad Primus, CLFP

FIS
Univest Capital, Inc.
Arvest Equipment Finance
U.S. Bank Equipment Finance
Key Equipment Finance

Hancock Whitney
First American Equipment Finance, a City National Bank Company
Fleet Advantage, LLC
Fleet Advantage, LLC
CoBank Farm Credit Leasing
Financial Pacific Leasing, Inc., an Umpqua Bank Company
Ascentium Capital LLC
Fleet Advantage, LLC
10-4 Financing, LLC

Commercial Capital Company, LLC
Arvest Equipment Finance
Arvest Equipment Finance
Odessa
1st Source Bank
1st Source Bank

Lease Corporation of America
Navitas Credit Corp.
AP Equipment Financing
U.S. Bank Equipment Finance
Complete Capital Services, Inc.
Ascentium Capital LLC
Odessa
Ascentium Capital LLC
Arvest Equipment Finance
LTi Technology Solutions
Key Equipment Finance
U.S. Bank Equipment Finance
U.S. Bank Equipment Finance

Odessa
1st Source Bank
Key Equipment Finance
Financial Pacific Leasing, Inc., an Umpqua Bank Company
JRM Business Advisory & Consulting Services, LLC
1st Source Bank
Navitas Credit Corp.
First American Equipment Finance, a City National Bank Company
Wintrust Specialty Finance
First American Equipment Finance, a City National Bank Company
NewLane Finance
AP Equipment Financing
Arvest Equipment Finance
Key Equipment Finance
First American Equipment Finance, a City National Bank Company
Ascentium Capital LLC
1st Source Bank
Crestmark Equipment Finance
Arvest Equipment Finance
Commercial Capital Company, LLC
JenCas Financial, Inc.
AP Equipment Financing
Key Equipment Finance
Oakmont Capital Services, LLC

Robert Quinn III, CLFP
Catherine Rein, CLFP
John (JR) Rickette, CLFP
Lewis Robbins, CLFP
Ryan Rogers, Associate
Stephen Royer, CLFP
Scott Ruettgers, CLFP
Cody Sanguinetti, CLFP
Kendel Santora, CLFP
Andrew Sawyers, CLFP
Linda Schenkel, CLFP
Shane Shidaker, CLFP
Galit Shkurenko, Associate
Cal Shoemake, Jr., CLFP
Joshua Shull, CLFP
Robert Smith, CLFP
Adam Sobke, Associate
Julie Stephens, CLFP
Alison Stromberg, CLFP
Jeffery Swift, CLFP
Megan Syltie, CLFP
Kelly Taran, CLFP
Benny Tarwater, CLFP
Tanner Teply, CLFP
John Thomsen, CLFP
Brad Thresher, CLFP
Cindy Trenerry, CLFP
Brandon Tunnell, Associate
Sarah Uballez, CLFP
Derek Vander Linden, CLFP
Jillian Vogel, CLFP
Karin Walker, CLFP
Robert Wallace, CLFP
Annie Weets, CLFP
Kayla Werkman, CLFP
James Wharton Jr., CLFP
Stacey Widom, CLFP
Stephanie Williamson-Horn, CLFP
Justin Wilmes, CLFP
Lee Wisler, CLFP
Morka Wolde, CLFP
Kyle Zaffuto, CLFP
Brian Zetting, Associate
Anthony Ziegler, CLFP

First American Equipment Finance, a City National Bank Company
Key Equipment Finance
Fleet Advantage, LLC
Ascentium Capital LLC
1st Source Bank
Fleet Advantage, LLC

Great American Insurance
Ascentium Capital LLC
Ascentium Capital LLC
The Pitney Bowes Bank, Inc.
1st Source Bank
ECS Financial Services, Inc.
Ascentium Capital LLC
Global Financial & Leasing Services LLC
Univest Capital, Inc.
AP Equipment Financing
Commercial Fleet Financing, Inc.
First American Equipment Finance, a City National Bank Company
U.S. Bank Equipment Finance
U.S. Bank Equipment Finance
First American Equipment Finance, a City National Bank Company
Ascentium Capital LLC
Key Equipment Finance
U.S. Bank Equipment Finance
BancorpSouth Equipment Finance
1st Source Bank
Ascentium Capital LLC
AP Equipment Financing
Key Equipment Finance
Lease Corporation of America
Financial Pacific Leasing, Inc., an Umpqua Bank Company
CoreTech Leasing, Inc.
U.S. Bank Equipment Finance
U.S. Bank Equipment Finance
Fleet Advantage, LLC
Ascentium Capital LLC
First American Equipment Finance, a City National Bank Company
U.S. Bank Equipment Finance
1st Source Bank
International Decision Systems
First American Equipment Finance, a City National Bank Company
Ascentium Capital LLC
Ascentium Capital LLC



Financial Pacific Leasing

BIG or small, we can handle it

Transactions \$5,000 - \$500,000

800.447.7107 | www.finpac.com



Pleased to support the CLFP Foundation

Financial Pacific Leasing, Inc. is a subsidiary of Umpqua Bank
Products offered by Financial Pacific Leasing are not FDIC insured.

**BUILDING RELATIONSHIPS.
SUPPORTING YOUR GROWTH.**

WINTRUST
SPECIALTY FINANCE

wintrust.com/wsf

Wintrust Specialty Finance is a division of Beverly Bank & Trust Company, N.A., a Wintrust Community Bank. Banking products provided by Wintrust Financial Corp. banks.

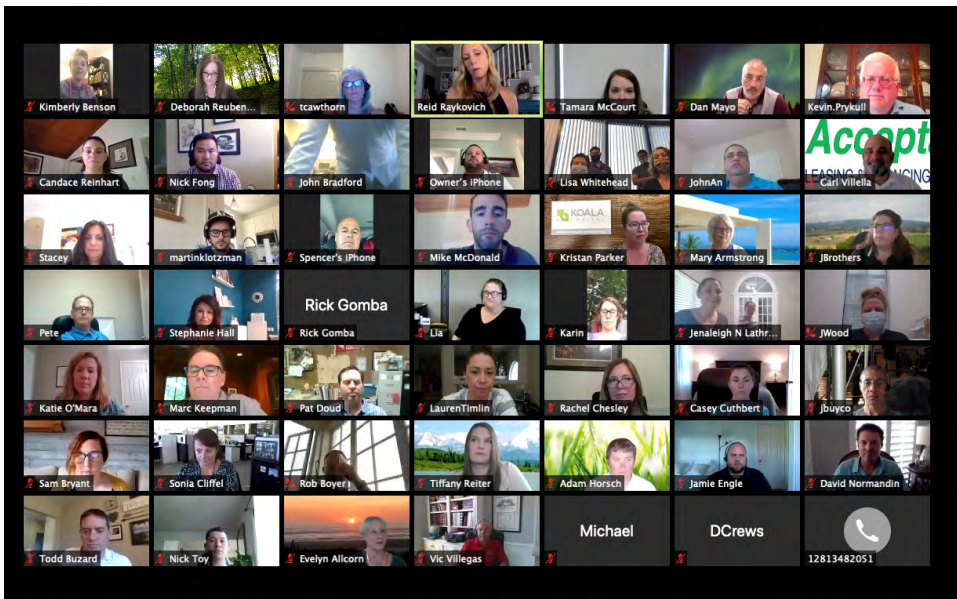


2020 CLFP CELEBRATION DAY

At 5:00 Eastern, on Thursday, August 20th, almost 250 CLFPs and Associates across the globe gathered to celebrate their designation. Due to COVID-19, the event was changed from several local gatherings to one fifteen-minute Zoom “Cheers” call. During this call, executive director Reid Raykovich, CLFP and Board President Kevin Prykull, CLFP facilitated the event and showcased the accomplishments of the Foundation; highlighted the pivot to online ALFPs and test-taking; and recognized the many contributions of the Foundation membership.

Deb Reuben, CLFP stated, “It was such a blast to see so many familiar faces after being apart for so long. What a great opportunity to reconnect and celebrate together. Congrats CLFP Foundation.”

Kevin Prykull, CLFP added, “CLFP Day recognized the superb contributions of the foundation and its members who serve our industry in a very professional way. This is especially important during these difficult times. A win-win event for all who attended!”



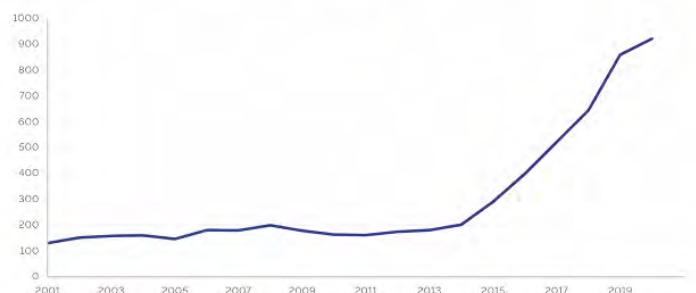
Cheers
to being
a CLFP!



Where we've been.



CLFP Foundation Growth



ALFP 2020 RECAP

The CLFP Foundation began the year by holding five in-person Academies for Lease & Finance Professionals (ALFP) prior to COVID-19 and switched to online ALFPs for the remaining seven. Below are those CLFPs who graciously volunteered their time to lead a subject (or several), and/or proctor.

Kawika Ahquin, CLFP
Caprice Archer, CLFP
Leslie Brown, CLFP
Donnie Bunn, CLFP
Eric Bunnell, CLFP
Todd Buzard, CLFP
Nina Cole, CLFP
Craig Colling, CLFP
Diana Crews, CLFP
Andrew Eller, CLFP
Nate Gibbons, CLFP
Marc Gingold, CLFP
Ben Hall CLFP
Shawn Halladay, CLFP
Carrie Hayes, CLFP

Sara Leung, CLFP
Robert Mater, CLFP
Katie Morris, CLFP
Greg Pabich, CLFP
Matt Padden, CLFP
Kevin Prykull, CLFP
Reid Raykovich, CLFP
Candace Reinhart, CLFP
Deb Reuben, CLFP
Nick Ross, CLFP
Chris Tokin, CLFP
Lia Wax, CLFP
Stacey Widom, CLFP
Christine Williams, CLFP

We would also like to thank all of our hosts!



CINDY SPURDLE

Award of Excellence

The Certified Lease & Finance Professional (CLFP) Foundation announced the 2020 Cindy Spurdle Award of Excellence during the CLFP Celebration Day on August 20th, and officially presented it to Andrew Eller, CLFP of First American Equipment Finance (FAEF) during the monthly Foundation Board Call on September 10th. The award was created in 2012 to acknowledge the CLFP who has contributed the most to the industry and best represents the CLFP ideals for the year. Nominees are submitted by the CLFP membership and the final winner is voted on by the CLFP Board of Directors.



FAEF has 133 CLFPs and Associates and employs two of the nine Cindy Spurdle Award winners. Alan Sikora, CLFP and CEO at First American stated, “The CLFP program has enabled hundreds of professionals to gain a deeper understanding of our industry. At First American, it is a fundamental component of our professional development strategy. Andrew’s commitment to his colleagues and our industry is inspiring.”

“It is an honor to be recognized as the recipient of the 2020 Cindy Spurdle Award of Excellence.

The contributions that were made this year to successfully pivot the Foundation’s operating procedures to digital experiences truly speaks to the resiliency of the Foundation’s Board of Directors, partnering organizations, current and prospective CLFPs. We have continued to grow and strengthen our CLFP community through the pandemic and I am grateful to have had the opportunity to be a contributing factor to this success. Thank you to the Foundation and all CLFPs for your unwavering dedication to continually educate our industry,” added Andrew Eller, CLFP.

Proud Supporter of
the CLFP Foundation

www.faef.com

Integrity + Smarts

Less work, more flow

Automate your asset finance business processes end to end - you control how you work on the Odessa Platform.

Learn more

2021 CLFP BOARD OF DIRECTORS



TODD BUZARD, CPA, CLFP
First American Equipment Finance



JOE LEONARD, CLFP
Oakmont Capital Services



CANDACE REINHART, CLFP
CoreTech Leasing



CRAIG COLLING, CLFP
Ascentium Capital



MIKE MCDONALD, CLFP
Stryker



DEB REUBEN, CLFP
TomorrowZone



NATE GIBBONS, CLFP
Innovation Finance



DANIEL NELSON, CLFP
Tamarack Consulting



JASON SEITZ, CLFP
BMO Harris Equipment Finance



THERESA KABOT, CLFP
K2 Funding



KATHY NORDENDAHL, CLFP
Dedicated Funding



LIA WAX, CLFP
Financial Pacific Leasing



LARRY LACHANCE, CLFP
Bankers Capital



KEVIN PRYKULL, CLFP



JENNY WOOD, CLFP
Orion First Financial

The Foundation would especially like to thank those who served on the Board of Directors in 2020 and will not be returning.



SUDHIR AMEMBAL, CLFP
who served for two years



ANDREW ELLER, CLFP
who served for five years



TAMARA MCCOURT, CCE, CLFP
who served for two years

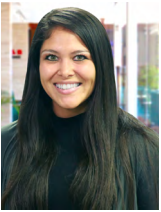


NICK ROSS, CLFP
who served for two years



PETE SAWYER, CLFP
who served for three years

NEW CLFPS AND ASSOCIATES



VANESSA ANDEL, CLFP
Commercial Fleet Financing.



MATT BARRETT, ASSOCIATE
First American Equipment Finance.



LAUREN BLOWERS, CLFP
First American Equipment Finance



BRUNO CAMARA, CLFP
Cisco Systems Capital Corp.



JENA DIRKES, CLFP
Oakmont Capital Services, LLC



ADAM DOMKE, CLFP
Oakmont Capital Services, LLC



DANIEL DUDLEY, CLFP
Odessa



CHRISTINE DURFEE, CLFP
First American Equipment Finance



BETSY EGERBERG, ASSOCIATE
AP Equipment Financing



SCOTT FRY, CLFP
Global Financial & Leasing Services LLC



JAYME GERADS, CLFP
Oakmont Capital Services, LLC



JOE GUAGE, CLFP
First American Equipment Finance



RYAN HINTON, CLFP
Hancock Whitney



CHRIS JOHNSON, CLFP



BIJO JOSEPH, CLFP
Odessa



Lending & Leasing Solutions
Portfolio Management Solutions

www.tamarackconsulting.com
info@tamarackconsulting.com

PROUD SUPPORTERS OF THE CLFP



Oakmont Capital Services, LLC
WE MAKE IT POSSIBLE.

CALL 877-701-2391 OR VISIT WWW.OAKMONTFINANCE.COM

NEW CLFPS AND ASSOCIATES

From last publication through November 2020



KIM KING, CLFP
Navitas Credit Corp.



TIMOTHY KINNEY, CLFP
AP Equipment Financing



LEONARD LANE, CLFP
Odessa



CHUNAN LIU, CLFP
Odessa



CONNOR MCKEEVE, CLFP
Wintrust Specialty Finance



CORI MILLER, ASSOCIATE
AP Equipment Financing



DAVID MULLIN, CLFP
First American Equipment Finance



SHELLEY PETERSON, ASSOCIATE
AP Equipment Financing



CHAD PRIMUS, CLFP
Oakmont Capital Services, LLC



JOSH SHULL, CLFP
Global Financial & Leasing Services LLC



ADAM SOBKE, ASSOCIATE
AP Equipment Financing



KELLY TARAN, CLFP
First American Equipment Finance



SARAH UBALLEZ, CLFP
AP Equipment Financing

IDScloud™
The 100% SaaS Engine
for Asset Finance

INCREASE VOLUMES.
RESPOND TO
OPPORTUNITIES. **FAST.**

Learn More - idsgrp.com





Partners in Equipment Financing & Leasing for over 20 years!



**FAST
FLEXIBLE
KNOWLEDGE-BASED
FINANCING**

CALL US AT
1-800-604-4817

www.apfinancing.com



**We are proud supporters
of the CLFP Foundation**

COMPANIES WITH 3 OR MORE CLFPS

2020 RANK	2019 RANK	COMPANY	2020 COUNT	2019 COUNT	CHANGE
1	1	First American Equipment Finance, a City National Bank Company	136	124	9%
2	5	Ascentium Capital LLC	49	32	35%
3	6	U.S. Bank Equipment Finance	39	26	33%
4	3	Financial Pacific Leasing, Inc., an Umpqua Bank Company	33	33	0%
5	2	Stearns Bank NA-Equipment Finance Division	33	39	-18%
6	3	Amur Equipment Finance	26	33	-27%
7	6	BB&T Now Truist	25	26	-4%
8	8	AP Equipment Financing	23	24	-4%
9	12	Oakmont Capital Services, LLC	20	13	35%
10	16	Arvest Equipment Finance	19	11	42%
11	9	ECS Financial Services, Inc.	16	18	-13%
12	37	Key Equipment Finance	15	3	80%
13	n/a	1st Source Bank*	14	0	100%
14	10	DLL	13	14	-8%
14	10	KLC Financial, Inc.	13	14	-8%
16	13	IDS	12	12	0%
16	13	Ivory Consulting Corporation	12	12	0%
16	13	Stryker	12	12	0%
19	16	Canon Financial Services, Inc.	10	11	-10%
19	n/a	Fleet Advantage, LLC*	10	2	80%
19	19	Great American Insurance	10	9	10%
19	24	Odessa	10	7	30%
19	18	Orion First Financial LLC	10	10	0%
19	19	Wintrust	10	9	10%
25	19	BMO Harris Equipment Finance Company	9	9	0%
25	19	Northland Capital Financial Services, LLC	9	9	0%
27	23	BancorpSouth Equipment Finance	8	8	0%
27	37	Navitas Credit Corp.	8	3	63%
29	24	Celtic Commercial Finance	7	7	0%
29	28	The Huntington National Bank	7	6	14%
31	37	Alliance Funding Group	6	3	50%
31	24	Beacon Funding Corporation	6	7	-17%
33	n/a	CoreTech Leasing, Inc.*	5	1	80%
33	29	First Foundation Bank	5	5	0%
33	29	GreatAmerica Financial Services	5	5	0%
33	37	LTi Technology Solutions	5	3	40%
33	n/a	Univest Capital, Inc.*	5	1	80%
38	32	Bank of the West	4	4	0%
38	n/a	BankFinancial, NA*	4	0	100%
38	29	Commerce Bank	4	5	-25%

*Denotes companies not on the 2020 list

COMPANIES WITH 3 OR MORE CLFPS

38	37	Global Financial & Leasing Services LLC	4	3	25%
38	32	Marlin Capital Solutions	4	4	0%
38	32	NCMIC Finance Corporation	4	4	0%
38	n/a	NorthTeq, Inc.*	4	0	100%
38	32	UniFi Equipment Finance, Inc.	4	4	0%
38	37	Western Equipment Finance	4	3	25%
47	n/a	Cisco Systems Capital Corporation*	3	1	67%
47	n/a	Commercial Capital Company, LLC*	3	1	67%
47	n/a	ENGS Commercial Finance Co.*	3	0	100%
47	37	First National Capital Corporation	3	3	0%
47	n/a	FIS*	1	0	100%
47	37	FSG Capital, Inc.	3	3	0%
47	37	Hanmi Bank	3	3	0%
47	n/a	Lease Corporation of America*	3	2	33%
47	n/a	North Mill Equipment Finance*	3	1	67%
47	37	Providence Capital Funding, Inc.	3	3	0%
47	37	Quality Leasing Co., Inc.	3	3	0%
47	37	Taycor Financial	3	3	0%

*Denotes companies not on the 2020 list

JOB SEARCHING CLFP? DON'T FORGET TO CHECK ORION FIRST!

At its core, Orion is a manager of risk - so if you're looking to make a low-risk, high-reward career decision visit orionfirst.com/careers for current job openings.

SERVING THOSE WHO
FUND SMALL BUSINESS

ORION
FIRST

ascentium
CAPITAL

Choose an award-winning commercial lender!



Learn more online:
Ascentium.Info/CLFP2020

Financing subject to credit parameters.



Reinventing The **2020** Vision
Cutting-edge platform for the Equipment Finance Industry

Look Ahead...

Do you have freedom to access your finance software where you are?

Now you can with LTIcloud a scalable and secure cloud service for over 12 years.

402-493-3445 | www.LTISolutions.com



YOUR LEASE PORTFOLIO, EXPERTLY MANAGED

ECS
financial services

Services to Help Your Business

- Lease Portfolio Management
- Income Tax and Accounting Services
- Advisory Services
- Sales/Use Tax Consulting, Compliance, and Registration
- Personal Property Tax Compliance
- 10 CLFPs on Staff

800.826.7070

Nancy Geary, CPA, CLFP
Shari Lipski, CLFP
Visit: ecsfinancial.com/clfp

Thank you to our corporate partners

PLATINUM (\$2500)

*AP Equipment Financing
Ascentium Capital
ECS Financial Services
Financial Pacific Leasing
First American Equipment
Finance
IDS
LTi Technology Solutions*

*Oakmont Capital Services
Odessa
Orion First Financial
Tamarack Consulting
Wintrust Specialty Finance*

GOLD (\$1750)

Amur Equipment Finance

SILVER (\$1150)

BMO Harris Equipment Finance

BRONZE (\$500)

*AACFB
Arvest Equipment Finance
Ivory Consulting Corporation
Pawnee Leasing Corporation*

Thank you to our personal partners

BENEFACTOR (\$250+)

*Rob Boyer, CLFP
Donnie Bunn, CLFP
Tina Cartwright, CLFP
Craig Colling, CLFP
Mike Coon, CLFP
Jeff Elliott, CLFP
Joe Franco, CLFP
Rick Galtelli, CLFP*

SPONSOR (\$100-\$249)

*Heather Ayers, CLFP
Eric Bunnell, CLFP
Chris Enbom, CLFP
John Freeman, CLFP
Steve Geller, CLFP
Nick Gibbens, CLFP
David Gill, CLFP
Brent Hall, CLFP
Steve Hanneman, CLFP*

SUPPORTER (\$50-\$99)

*Steve Crane, CLFP
Jake Cutler, CLFP
Tina Eickhoff, CLFP
Marc Gingold, CLFP
Ron Gonzales, CLFP
John Harders, CLFP*

CONTRIBUTOR (\$25-\$49)

*Kevin Canepa, CLFP
Lynn Deitrick, CLFP
Julie Dickerson, CLFP*

*Lisa Genereux, CLFP
Nathan Gibbons, CLFP
Bob Humber, CLFP
Jaime Kaneshina, CLFP, BPB
Marc Keepman, CLFP
Joe Leonard, CLFP
Toby McDonough, CLFP
Daniel Nelson, CLFP*

*Robert Harris, CLFP
Jack Harvey, CLFP
Andrew Mallinger, CLFP
Zack Marsh, CLFP
Mic Mount, CLFP
Jake Nguyen, CLFP
Greg Pabich, CLFP
Shervin Rashti, CLFP
Colin Rosenmeyer, CLFP*

*Mike Helder, CLFP
Ray Lavin, CLFP
Beth Maaske, CLFP
Cate McDonald, CLFP
Mark McKissick, CLFP
Raquel O'Leary, CLFP*

*Melissa Kaul, CLFP
Martin Klotzman, CLFP
Robert Knudson, CLFP*

*David Normandin, CLFP
Kevin Prykull, CLFP
Reid Raykovich, CLFP
Candace Reinhart, CLFP
Deb Reuben, CLFP
Amy Spragg, CLFP
Don Wampler, CLFP*

*Brenton Russell, CLFP
Brian Schonfeld, CLFP
Guy Selinka, CLFP
Matt Vazzana, CLFP
Carl Villella, CLFP
Lisa Whitehead, CLFP
Christine Williams, CLFP
Bruce Winter, CLFP*

*Kirstin Patterson, CLFP
Joe Sclafani, CLFP
Kristi Serrano, CLFP
Rocky Soliday, CLFP
Natalie Tawil, CLFP
Scott Wheeler, CLFP*

*Michael McElroy, CLFP
Kevin Vick, CLFP
Terry Wood, CLFP*