

ACCOMPLISHMENT REPORT

CLFP | 2021

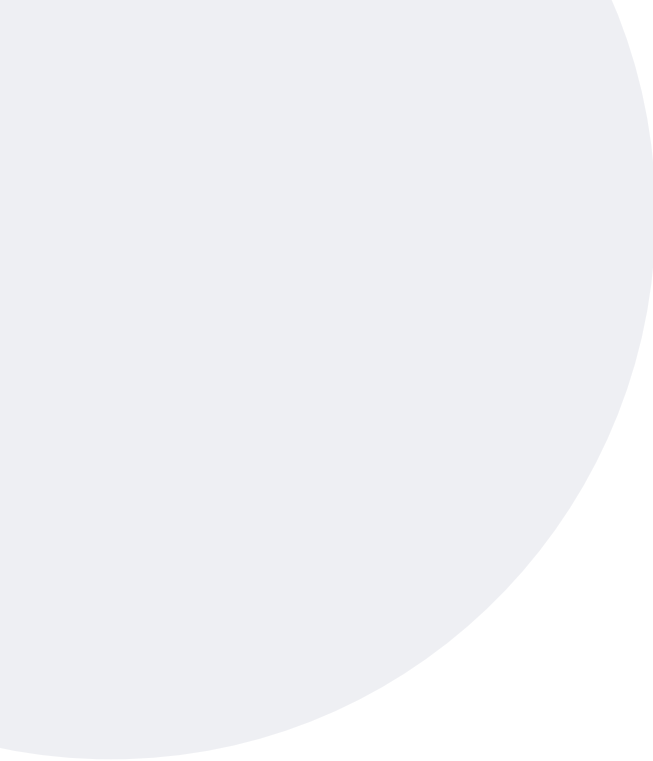


IN THIS ISSUE

3 2021 Board of Directors
4 2021 Membership
8 Cindy Spurdle Award of Excellence & CLFP Day
9 ALFP 2021 Recap
10 2022 Board of Directors

12 Companies with 3 or More CLFPs
14 Thank You to Our Sponsors!
16 New CLFPs and Associates
17 Thank You to Our 2021 Personal Partners!





2021 BOARD OF DIRECTORS

Nathan Gibbons, CLFP

President | *Innovation Finance*

Jenny Wood, CLFP

Vice President | *Orion First Financial*

Lia Wax, CLFP

Secretary | *Financial Pacific Leasing*

Todd Buzard, CPA, CLFP

Treasurer | *First American Equipment Finance*

Kevin Prykull, CLFP

Past President | *Retired*

Craig Colling, CLFP

Ascentium Capital

Theresa Kabot, CLFP

Kabot Commercial Leasing/K2 Funding

Larry LaChance, CLFP

Bankers Capital

Joe Leonard, CLFP

Oakmont Finance

Mike McDonald, CLFP

Stryker

Daniel Nelson, CLFP

Tamarack Consulting

Kathy Nordendahl, CLFP

Dedicated Funding, LLC

Candace Reinhart, CLFP

CoreTech Leasing

Deborah Reuben, CLFP

Tomorrow Zone

Jason Seitz, CLFP

BMO Harris Equipment Finance

STAFF

Reid Raykovich, CLFP

Executive Director

Sandy Vigilia

Executive Administrator

THANK YOU TO OUR SUPPORTING ASSOCIATIONS



2021 MEMBERSHIP

The Foundation is pleased to announce that its membership surpassed the 1,000-member mark when Jay Christianson, CLFP of U.S. Bank passed on May 5th, 2021. Furthermore, the membership continues to grow at a rapid rate with a 12% increase, finishing the year (as of December 6, 2021) at 1,082 CLFPs and Associates. Below are those that joined the community in 2021:

Krishna Agrawal	<i>DLL</i>	Christopher Crespo	<i>Unknown</i>
Benjamin Alcorn	<i>U.S. Bank Equipment Finance</i>	Jacque Cripe	<i>Hitachi Capital America Corp.</i>
Parker Anderson	<i>Channel</i>	Andrew Cvitanov, Jr.	<i>DLL</i>
Trevor Anderson	<i>U.S. Bank Equipment Finance</i>	Anthony Dahms	<i>U.S. Bank Equipment Finance</i>
Megha Banerjee	<i>Odessa</i>	Colleen Daniels	<i>Sun First Equipment Finance</i>
Roxanne Bobo	<i>DLL</i>	Tamara Darnow	<i>Key Equipment Finance</i>
Patricia Boehl	<i>DLL</i>	Matthew de Aguiar	<i>Fleet Advantage, LLC</i>
Joseph Borges	<i>North Mill Equipment Finance</i>	Dino (Lorenzo) DeStefanis	<i>Allied Capital Group</i>
Heather Broadwell	<i>CoreTech Leasing, Inc.</i>	Laura Dodson	<i>Truist</i>
Alex Bryson	<i>LTi Technology Solutions</i>	Jennifer Dubinsky	<i>Orion First Financial LLC</i>
Joshua Budny	<i>First American Equipment Finance, a City National Bank Company</i>	Austin Eames	<i>Key Equipment Finance</i>
Chris Byrnes	<i>Ascentium Capital LLC</i>	Kari Edgington	<i>DLL</i>
Gregory Campbell	<i>First American Equipment Finance, a City National Bank Company</i>	Brock Edwards	<i>Key Equipment Finance</i>
Christina Campos	<i>Lease Corporation of America</i>	Antionette Egan	<i>Key Equipment Finance</i>
Dean Ceglia	<i>DNC Consulting LLC</i>	Betsy Egeberg	<i>AP Equipment Financing</i>
Brian Change	<i>First American Equipment Finance, a City National Bank Company</i>	Maria Ehlers	<i>American Equipment Financial Services</i>
Todd Chase	<i>Ascentium Capital LLC</i>	James Eulenstein	<i>Key Equipment Finance</i>
Donna Christensen	<i>CSC Global</i>	Jacob Fahl	<i>Hitachi Capital America Corp.</i>
Jay Christiansen	<i>U.S. Bank Equipment Finance</i>	Chase Flamand	<i>DLL</i>
Marley Clark	<i>Channel</i>	Gillian Foster	<i>First American Equipment Finance, a City National Bank Company</i>
Sean Cokeley	<i>Navitas Credit Corp.</i>	Marcus Frederickson	<i>KLC Financial, Inc.</i>
		Judy Garner	<i>Navitas Credit Corp.</i>
		Amy Gossin	<i>Key Equipment Finance</i>
		Kaelyn Green	<i>Orion First Financial LLC</i>

Jacob Griffin	<i>Unknown</i>	Roderick Knoll	<i>Marathon Commercial Capital, LLC</i>
Lucas Grittner	<i>Channel</i>	Vincent Knowlton	<i>Entegra Capital LLC</i>
Megan Grout	<i>DLL</i>	Cory Krogen	<i>Channel</i>
Lisa Guelzow	<i>Key Equipment Finance</i>	Kevin Lacey	<i>DLL</i>
Jennifer Hagman	<i>U.S. Bank Equipment Finance</i>	Stephanie Langford	<i>Navitas Credit Corp</i>
Brock Hansen	<i>LTi Technology Solutions</i>	Griffin Lefeber	<i>KLC Financial, Inc.</i>
Gary Hanson	<i>Lease Corporation of America</i>	Stephanie Leyba	<i>Anuva Capital</i>
Andrew Hartman	<i>U.S. Bank Equipment Finance</i>	Sung Lim	<i>U.S. Bank Equipment Finance</i>
Kathryn Havlik	<i>Key Equipment Finance</i>	Jack London	<i>Meridian Equipment Finance</i>
Robert (David) Hayes	<i>LTi Technology Solutions</i>	Michael Luftig	<i>First American Equipment Finance, a City National Bank Company</i>
Bryce Hentges	<i>Channel</i>	Thomas Lyle	<i>Unknown</i>
Shannon Hoffman	<i>Lease Corporation of America</i>	Adam Mancuso	<i>First American Equipment Finance, a City National Bank Company</i>
Maggie Holly	<i>Hanmi Bank</i>	Kerilyn Marlink	<i>Key Equipment Finance</i>
Darlene Hookstra	<i>Lewis Tree Service, Inc.</i>	Maia McBurney	<i>Odeza</i>
Jordan Hopkins (CLFP Associate)	<i>Stearns Bank NA- Equipment Finance Division</i>	Anthony McCormick	<i>Odessa Technologies, Inc.</i>
Brylee Horning	<i>Orion First Financial LLC</i>	Justin McIntyre	<i>First American Equipment Finance, a City National Bank Company</i>
Rhonda Howlett	<i>Key Equipment Finance</i>	Carrie McKernan	<i>Lease Corporation of America</i>
Justin Irons	<i>ECS Financial Services, Inc.</i>	Benjamin McLoughlin	<i>Vision Financial Group, Inc.</i>
Trent Iverson	<i>Channel</i>	Britta McSpren	<i>DLL</i>
Douglas Jackson	<i>North Mill Equipment Finance</i>		
Jacquelyn Jacobs	<i>Fleet Advantage, LLC</i>		
Donald Kemp	<i>DLL</i>		
Stacy Kiley	<i>U.S. Bank Equipment Finance</i>		
Sean Kilfoyle	<i>Key Equipment Finance</i>		

2021 MEMBERSHIP (continued)

Andrew Mellon	<i>MoneyCapital Equipment Finance</i>	Philip Rivera	<i>First American Equipment Finance, a City National Bank Company</i>
Violeta Misajlovich	<i>Lease Corporation of America</i>	Ryan Rogers	<i>Unknown</i>
Matthew Nalbach	<i>Key Equipment Finance</i>	Arthur Royter	<i>DLL</i>
Kevin Nash	<i>Key Equipment Finance</i>	Amanda Sapienza	<i>Nexseer</i>
Peter Nguyen	<i>Strada Capital Corporation DBA Mazo Capital Solutions</i>	Alison Sauter	<i>TD Equipment Finance, Inc.</i>
Hank Nhep	<i>Key Equipment Finance</i>	Chad Schaffner	<i>Ascentium Capital LLC</i>
Donna O'Brien	<i>DLL</i>	Karin Schreck	<i>Key Equipment Finance</i>
Thomas O'Connell	<i>DLL</i>	Donald Seeley	<i>Beacon Funding Corporation</i>
Adam Ohme	<i>Channel</i>	Adrienne Sharma	<i>Channel</i>
Danielle Ormberg	<i>U.S. Bank Equipment Finance</i>	Mary Sharp	<i>Key Equipment Finance</i>
Jerome Orze, Jr.	<i>Unknown</i>	Mark Sheehan	<i>Lease Corporation of America</i>
Douglas Pearce II	<i>Key Equipment Finance</i>	Alexander Shields	<i>Byline Financial Group</i>
Lorraine Perkins	<i>GreatAmerica Financial Services</i>	Galit Shkurenko	<i>Unknown</i>
Connor Petersen	<i>Key Equipment Finance</i>	Kirsten Sinopoli	<i>DLL</i>
John Pfister	<i>Strada Capital Corporation DBA Mazo Capital Solutions</i>	Ashley Smith	<i>VFI Corporate Finance</i>
Carey Pierangeli	<i>DLL</i>	Kalah Sprabeary	<i>JADCO Holdings, Inc. dba HUB Funding Solutions</i>
Erik Porter	<i>U.S. Bank Equipment Finance</i>	James Stanley	<i>DLL</i>
Shannon Prange	<i>Orion First Financial LLC</i>	Debbie Stibbe	<i>U.S. Bank Equipment Finance</i>
Emiley Purvis	<i>Key Equipment Finance</i>	Kit Yee Studholme	<i>U.S. Bank Equipment Finance</i>
Tony Quesenberry	<i>Vanguard Truck Centers</i>	Michael Sulava	<i>KLC Financial, Inc.</i>
Jeffrey Richeson	<i>Smarter Equipment Finance, LLC</i>	Alison Taylor	<i>First American Equipment Finance, a City National Bank Company</i>
Kimberlee Riggs	<i>Orion First Financial LLC</i>	David Thommen	<i>Terex Financial Services</i>
Laura Riley	<i>Key Equipment Finance</i>	Sonia Thompson	<i>U.S. Bank Equipment Finance</i>
Michelle Riley	<i>Key Equipment Finance</i>	Mitchell Tobak	<i>North Mill Equipment Finance</i>
Robert Rinaldi	<i>Rinaldi Advisory Services</i>		

Tammy Trador *Lease Corporation of America*

Benjamin Tucker IV *First American Equipment Finance, a City National Bank Company*

Evan Tuozzoli *Nexseer Capital*

Heather Valenty *Key Equipment Finance*

Ryan van de Boogaard *Key Equipment Finance*

William Vassar *Key Equipment Finance*

Melissa Vinson *U.S. Bank Equipment Finance*

Janeen Waddell *Unknown*

Jeffrey Wenrich *U.S. Bank Equipment Finance*

Elizabeth Wiltberger *First American Equipment Finance, a City National Bank Company*

Amy Wingate *Cisco Systems Capital Corporation*

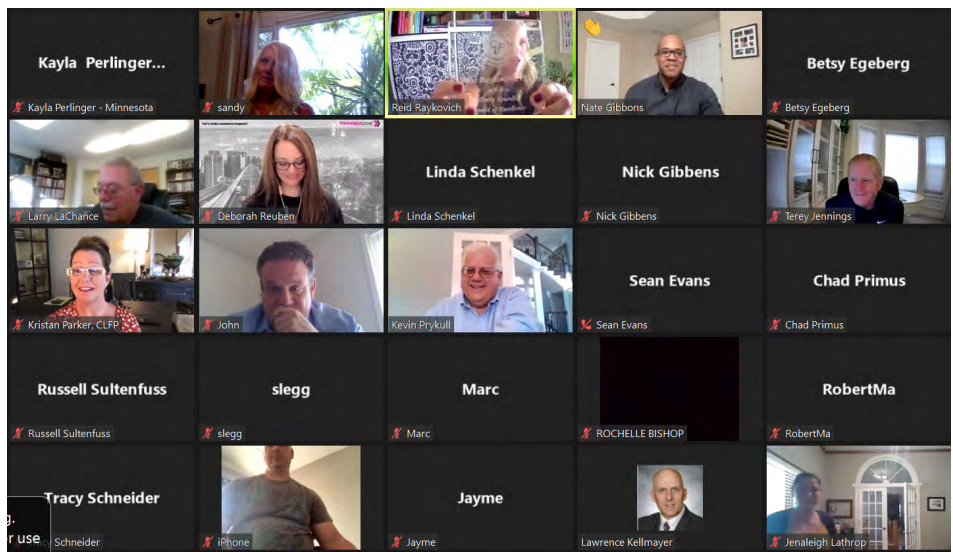
Evan Worley *North Mill Equipment Finance*

Brian Zetting *Ascentium Capital LLC*

Amy Zins *Ascentium Capital LLC*

Joseph Zrinzo *Ascentium Capital LLC*

CINDY SPURDLE AWARD OF EXCELLENCE & CLFP DAY



The Certified Lease and Finance Professional (CLFP) Foundation announced the 2021 Cindy Spurdle Award of Excellence on August 26th during a 15-minute celebratory “CLFP Day” virtual call with nearly 300 CLFPs and Associates in attendance. The award was presented to Kevin P. Prykull, CLFP.

The Cindy Spurdle Award was created in 2012 to acknowledge the CLFP who has contributed the most to the industry and best represents the CLFP ideals for the year. Nominees are submitted by the CLFP membership, and the final award candidate is voted upon by the entire CLFP Board of Directors.

Kevin has been a very active participant in the CLFP Foundation. He serves on the Foundation’s Executive Committee and Board of Directors, including as President in 2020. Kevin chairs the Body of Knowledge and Recertification Committees. He is an ongoing Instructor in the ALFP Academies, has instructed every section within the ALFPs, and has taught more virtual sessions than any other instructor. Kevin has been instrumental in working with the Foundation this year to create a self-paced online ALFP -- which will debut shortly.

Kevin is a seasoned leasing credit and risk professional with over 43 years of experience in all major aspects of the industry working in bank, captives, and independent leasing companies. He is retired after 30 years having served as the Credit Underwriting Executive for PNC Equipment Finance, LLC. He remains active in the ELFA on the Credit and Collections Committee, the Research Committee and is Chair of the Credit Manager Survey Forum. He teaches for ELFA and is an Adjunct Professor in Finance at Duquesne University.

Kevin says: “I am deeply honored and humbled to be selected as the recipient of the Cindy Spurdle Award of Excellence. For 2021 it is nice to be able to join an esteemed fellowship of prior awardees that likewise embrace the values and ideals of Cindy Spurdle and the Foundation. I actually had the privilege of meeting Cindy Spurdle in Philadelphia for lunch when I sat for the then “CLP” certification. What a helpful and inspiring individual. Supportive and guiding.”

“I encourage others to get involved with the Foundation as a volunteer. It is very rewarding and a great way to “give back” to the organization. It is easy. Start by joining one of the

many working committees or ad hoc groups. Thanks to Reid Raykovich, the Foundation and most importantly our membership for the opportunity to serve and to be recognized as this year’s recipient of the Cindy Spurdle Award of Excellence.”

The call also included a \$1,000 cash gift to celebrate the Foundation passing 1,000 members and Cassie Blodgett of Stryker Flex was the winner. She stated, “Congratulations on another great CLFP day celebration! It was great to see so many CLFP’s joined together virtually to mark the amazing 1,000-member milestone.”

ALFP 2021 RECAP

The CLFP Foundation continued to offer the Academy for Lease & Finance Professionals (ALFP) virtually and held fourteen throughout the year. Without the volunteers below, this could not have been possible. Just look at how many sections some of them taught (number after their name)!

A special thank you to our hosts!



Krishna Agrawal, CLFP (1)**
 Ben Alcorn, CLFP (4)**
 Leslie Brown, CLFP (1)
 Donnie Bunn, CLFP (16)
 Eric Bunnell, CLFP (4)
 Todd Buzard, CPA, CLFP (15)*
 Tina Cartwright, CLFP (2)
 Diana Crews, CLFP (5)
 Andrew Eller, CLFP (1)
 Kathy Nordendahl, CLFP (2)
 Greg Pabich, CLFP (10)
 Matt Padden, CLFP (3)
 Kevin Prykull, CLFP (21)
 Reid Raykovich, CLFP (2)
 Candace Reinhart, CLFP (7)
 Nick Ross, CLFP (6)
 Kalah Sprabeary, CLFP (5)**
 Lia Wax, CLFP (13)
 Melissa Vinson, CLFP (7)**
 Stacey Widom, CLFP (1)
 Christine Williams, CLFP (2)

*Taught at least one section at every ALFP

**New CLFP in 2021

2022 CLFP BOARD OF DIRECTORS



Todd Buzard, CPA, CLFP
First American Equipment Finance



Craig Colling, CLFP
Ascentium Capital



Nathan Gibbons, CLFP
Innovation Finance



Mikki Henkelman, CLFP
Oakmont Capital Holdings



Theresa Kabot, CLFP
Kabot Commercial Leasing



Paul Knowlton, CLFP
Huntington Equipment Finance



Larry LaChance, CLFP
Bankers Capital



Mike McDonald, CLFP
Stryker



Jena Morgan, CLFP
KLC Financial



Michael "Mic" Mount, CLFP
U.S. Bank Equipment Finance



Daniel Nelson, CLFP
Tamarack Technology



Kathy Nordendahl, CLFP
Dedicated Funding



Candace Reinhart, CLFP
CoreTech Leasing



Deborah Reuben, CLFP
TomorrowZone



Lia Wax, CLFP
Financial Pacific Leasing



Jenny Wood, CLFP
Orion First Financial

The Foundation would especially like to thank those who served on the Board of Directors in 2021 and will not be returning.

Joe Leonard, CLFP | Served for three years

Kevin Prykull, CLFP | Served for six years

Jason Seitz, CLFP | Served for four years

COMPANIES WITH 3 OR MORE CLFPS

2021 Rank	2020 Rank	Company	2021 Count	2020 Count	Change
1	1	First American Equipment Finance, a City National Bank Company	144	136	6%
2	3	U.S. Bank Equipment Finance	53	39	36%
3	2	Ascentium Capital LLC	47	49	-4%
4	12	Key Equipment Finance	37	15	147%
5	4	Financial Pacific Leasing, Inc., an Umpqua Bank Company	29	33	-12%
6	14	DLL	28	13	115%
7	5	Stearns Bank NA-Equipment Finance Division	26	33	-21%
8	6	Amur Equipment Finance	25	26	-4%
9	9	Oakmont Capital Holdings	23	20	15%
10	8	AP Equipment Financing	21	23	-9%
10	29	The Huntington National Bank	21	7	200%
12	10	Arvest Equipment Finance	20	19	5%
13	14	KLC Financial, Inc.	16	13	23%
14	n/a	Channel*	14	0	n/a
14	19	Orion First Financial LLC	14	10	40%
16	13	1st Source Bank	12	14	-14%
16	11	ECS Financial Services, Inc.	12	16	-25%
16	16	Ivory Consulting Corporation	12	12	0%
16	19	Odessa	12	10	20%
20	47	Lease Corporation of America	11	3	267%
20	27	Navitas Credit Corp.	11	8	38%
20	16	Stryker	11	12	-8%
20	19	Wintrust	11	10	10%
24	19	Canon Financial Services, Inc.	10	10	0%
24	19	Fleet Advantage, LLC	10	10	0%
26	19	Great American Insurance	9	10	-10%
26	16	IDS	9	12	-25%
26	47	North Mill Equipment Finance	9	3	200%
29	33	LTi Technology Solutions	8	5	60%

2021 Rank	2020 Rank	Company	2021 Count	2020 Count	Change
29	7	Truist	8	25	-68%
31	31	Alliance Funding Group	7	6	17%
31	27	BancorpSouth Equipment Finance	7	8	-13%
31	31	Beacon Funding Corporation	7	6	17%
31	25	BMO Harris Equipment Finance Company	7	9	-22%
31	25	Northland Capital Financial Services, LLC	7	9	-22%
36	29	Celtic Commercial Finance	6	7	-14%
36	33	GreatAmerica Financial Services	6	5	20%
38	38	BankFinancial, NA	5	4	25%
38	33	CoreTech Leasing, Inc.	5	5	0%
38	33	First Foundation Bank	5	5	0%
38	33	Univest Capital, Inc.	5	5	0%
42	38	Bank of the West	4	4	0%
42	47	Cisco Systems Capital Corporation	4	3	3%
42	38	Commerce Bank	4	4	0%
42	38	Global Financial & Leasing Services LLC	4	4	0%
42	47	Hanmi Bank	4	3	33%
42	47	Quality Leasing Co., Inc.	4	3	33%
42	38	UniFi Equipment Finance, Inc.	4	4	0%
49	47	Commercial Capital Company, LLC	3	3	0%
49	47	ENGS Commercial Finance Co.	3	3	0%
49	n/a	First Commonwealth Equipment Finance*	3	0	n/a
49	47	First National Capital Corporation	3	3	0%
49	47	FIS	3	1	200%
49	38	NCMIC Finance Corporation	3	4	-25%
49	n/a	Nexseer*	3	0	n/a
49	38	NorthTeq, Inc.	3	4	-25%
49	47	Taycor Financial	3	3	0%
49	38	Western Equipment Finance	3	4	-25%

*Denotes new to the list

Marlin; FSG, Providence Capital Funding dropped off

THANK YOU TO OUR SPONSORS!



Optimize
your equipment finance lifecycle.

TamarackTM
Guiding financial innovation

888 952 8268
Discover@TamarackNow.com

TamarackNow.com

quote | apply | credit | document
notify | ocr | integrate

aurora
vendor portal by **northteq**



LTI
Technology Solutions

Building the Future of Solutions

Our Focus is YOU.
Our Purpose is YOUR success.

Building a better equipment finance industry.



FIRST AMERICAN
AN RBC/CITY NATIONAL COMPANY

PROUD SUPPORTER
CLFP FOUNDATION
faef.com

**BUILDING RELATIONSHIPS.
SUPPORTING YOUR GROWTH.**

WINTRUST
SPECIALTY FINANCE

wintrust.com/wsf

Wintrust Specialty Finance is a division of Beverly Bank & Trust Company, N.A., a Wintrust Community Bank. Banking products provided by Wintrust Financial Corp. banks.

MEMBER FDIC

Looking for flexible & strategic financing?
Talk to us.

To learn more visit:
Ascentium.info/CLFP2021

ascentium
CAPITAL

Financing dependent on credit parameters. Loans made or arranged pursuant to a California Financing Law license.



Financial Pacific Leasing

BIG or small, we can handle it

Transactions \$5,000 - \$500,000

800.447.7107 | www.finpac.com



Pleased to support the CLFP Foundation

Financial Pacific Leasing, Inc. is a subsidiary of Umpqua Bank
Products offered by Financial Pacific Leasing are not FDIC insured.

Less work, more flow

Automate your asset finance business processes end to end - you control how you work on the Odessa Platform.

Learn more

odessa



**A·P EQUIPMENT
FINANCING**

Partners in Equipment Financing
& Leasing for over 20 years!



The Power
of *Personal*

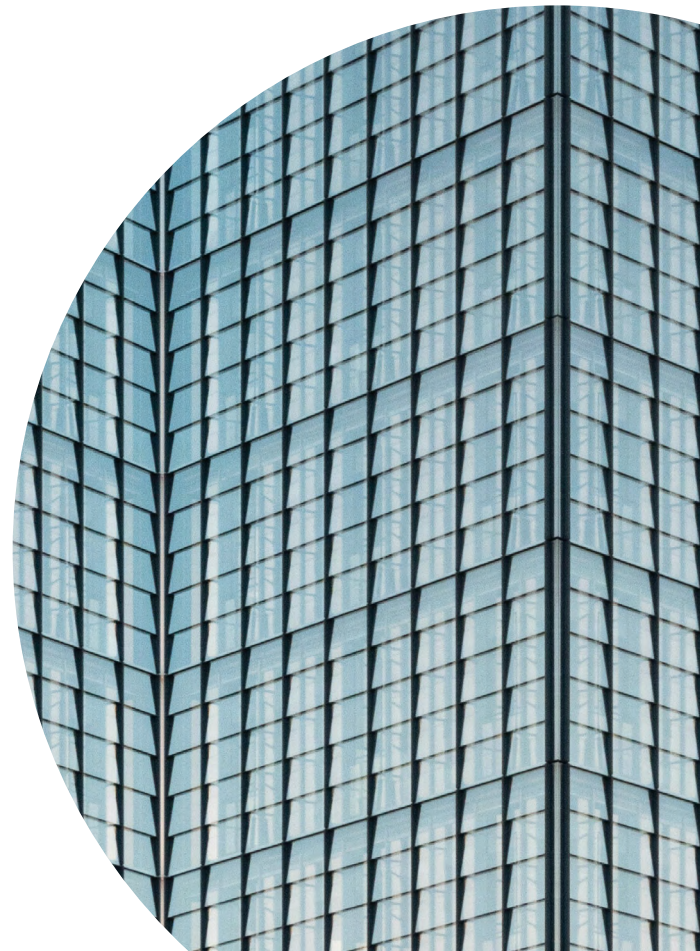
CALL US AT

1-800-604-4817

www.apfinancing.com



We are proud
supporters of the CLFP
Foundation



NEW CLFPS AND ASSOCIATES



Patty Boehl, CLFP



Chase Flamand,
CLFP



Amy Gossin, CLFP



Megan Grout, CLFP



Darlene Hookstra,
CLFP



Vince Knowlton,
CLFP



Stephanie
Langford, CLFP



Rob Magee, CLFP



Anthony
McCormick, CLFP



Benjamin
McLoughlin, CLFP



Thomas O'Connell,
CLFP



Amanda Sapienza,
CLFP



Alexander Shields,
CLFP



Kirsten Sinopoli,
CLFP



Evan Tuozzoli, CLFP

THANK YOU TO OUR 2021 PERSONAL PARTNERS

BENEFACTOR \$250+

Kip Amstutz, CLFP
Donnie Bunn, CLFP
Rob Boyer, CLFP
Tina Cartwright, CLFP
Andrew Clark, CLFP
Craig Colling, CLFP
Mike Coon, CLFP
Jeff Elliott, CLFP
Chris Enbom, CLFP
Bob Fisher, CLFP
Paul Fogle, CLFP
Lisa Genereux, CLFP
Nathan Gibbons, CLFP
Ben Hall, CLFP
Jaimie Haver, CLFP
Marc Keepman, CLFP
Jaime Kaneshina, CLFP
Tim Kehoe, CLFP
Joe Leonard, CLFP
Shari Lipski, CLFP
Toby McDonough, CLFP
Mic Mount, CLFP
Daniel Nelson, CLFP
David Normandin, CLFP
Kevin Prykull, CLFP
Reid Raykovich, CLFP
Candace Reinhart, CLFP
Chris Santy, CLFP
Pete Sawyer, CLFP
Dave Schaefer, CLFP
Amy Spragg, CLFP
Don Wampler, CLFP
Christine Williams, CLFP

SPONSOR \$100-\$249

Derek Anniston, CLFP
Teresa Billick, CLFP
Eric Bunnell, CLFP
Tracey Elfering, CLFP
Kirstin Elmer, CLFP
Cindy Fleck, CLFP
Nick Fong, CLFP
Joe Franco, CLFP
John Freeman, CLFP

Nick Gibbens, CLFP
Michael Green, CLFP
Steve Hanneman, CLFP
Stephanie Hall, CLFP
Brent Hall, CLFP
Jack Harvey, CLFP
Theresa Kabot, CLFP
Tammy Kady, CLFP
Tom Lockhart, CLFP
Mark McKissick, CLFP
Katie O'Mara, CLFP
Greg Pabich, CLFP
Shervin Rashti, CLFP
Deborah Reuben, CLFP
Ricardo Rios, CLFP
Colin Rosenmeyer, CLFP
Brenton Russell, CLFP
Tony Sedlacek, CLFP
Andrea Schmid, CLFP
Jen Stich, CLFP
Spencer Thomas, CLFP
Matt Vazzana, CLFP
Dave Verkinderen, CLFP
Vic Villegas, CLFP
Carl Villella, CLFP
Annette Watkins-Harris, CLFP
Bruce Winter, CLFP
Terry Wood, CLFP

SUPPORTER \$50 - \$99

Shannah Berger, CLFP
Paul Crnkovic, CLFP
Lori Dennis, CLFP
Suzann Fakhoury, CLFP
John Harders, CLFP
Katharine Harris, CLFP
Judi Jenks, CLFP
Nathan Kary, CLFP
Larry Kellmayer, CLFP
Paul Knowlton, CLFP
Jessica Kort, CLFP
Christy Kusilek, CLFP
Ray Lavin, CLFP
Dave Maslyk, CLFP
Peter McCaffrey, CLFP
Tim Miller, CLFP

Kevin Peterson, CLFP
Rhonda Rester, CLFP
Kathie Russell, CLFP
Ron Schutz, CLFP
Joe Sclafani, CLFP
Don Segura, CLFP
Kristi Serrano, CLFP
Molly Simon, CLFP
Kevin Vick, CLFP
Lisa Whitehead, CLFP
Mike Wiedemer, CLFP

CONTRIBUTOR \$25-\$49

Dan Callahan, CLFP
Kevin Canepa, CLFP
Martin Cowie, CLFP
Judith Cummings, CLFP
Ron Elwood, CLFP
Erin Foster, CLFP
Josh Huyck, CLFP
Melissa Kaul, CLFP
Larry LaChance, CLFP
Cate McDonald, CLFP
Amy Moffitt, CLFP
Sinead Murphy, CLFP
Andrew Nere, CLFP
Kathy Nordendahl, CLFP
Randy Peterson, CLFP
Tracy Schneider, CLFP
Nate Wallenhorst, CLFP
Brooke Warren, CLFP
Clint Williamson, CLFP