

ACCOMPLISHMENT REPORT

CLFP | 2024

2024

IN THIS ISSUE

2 2024 Board of Directors
3 Letter from the CEO
4 2024 CLFPs Added
7 CLFP Foundation Surpasses
1,500 Members
8 CLFP Foundation Celebrates
CLFP Day

10 ALFP 2024 Recap
12 Companies with 3 or More CLFPs
15 New CLFPs and Associates
23 Thank You to Our 2024
Ambassadors, Corporate
and Individual Partners!



CLFP Foundation | 2024 V.4

2024 BOARD OF DIRECTORS

Lia Wax, CLFP

Past President | *Financial Pacific Leasing*

Todd Buzard, CPA, CLFP

President | *First American Equipment Finance*

Candace Reinhart, CLFP

Vice President | *CoreTech Leasing*

Mike McDonald, CLFP

Treasurer | *CoreTech Leasing*

Kathy Nordendahl, CLFP

Secretary | *Dext Capital*

Jill Brothers, CLFP

Director | *Financial Pacific Leasing*

Craig Colling, CLFP

Director | *Ascentium Capital*

Nick Gibbens, CLFP

Director | *Wintrust Specialty Finance*

Ben Hall, CLFP

Director | *U.S. Bank Equipment Finance*

Michelle “Mikki” Henkelman, CLFP

Director | *Oakmont Capital Services*

Paul Knowlton, CLFP

Director | *Huntington National Bank*

Jill Molitor, CLFP

Director | *Stearns Bank*

Michael “Mic” Mount, CLFP

Director | *U.S. Bank Equipment Finance*

Carrie Radloff, CLFP

Director | *American Financial Partners*

Deborah “Deb” Reuben, CLFP

Director | *TomorrowZone*

Molly Simon, CLFP

Director | *DLL*

Bruce Winter, CLFP

Director | *FSG Capital*

CLFP Foundation Staff

Reid Raykovich, CLFP, CAE
CEO

Mel Vinson, CLFP

VP of Marketing & Development

Sandy Vigilia

Executive Administrator



A special thank you to our departing Board Members:
Mike McDonald, CLFP, Lia Wax, CLFP, and
Bruce Winter, CLFP.



LETTER FROM THE CEO

Dear Colleagues and Friends,

As we reflect on another remarkable year of growth, innovation, and collaboration, I am filled with pride and gratitude for the collective efforts of our staff, board, and volunteers. It is a privilege to share with you the highlights of our achievements in this year's Annual Accomplishment Newsletter.

This year, I had the honor of speaking on a panel in Newfoundland, Canada, where we discussed the exciting launch of the upcoming Canadian CLFP program, set to debut next year. This initiative marks a significant step in expanding our reach and impact within the industry.

We also made great strides in supporting Historically Black Colleges and Universities (HBCUs). We successfully introduced a new Micro-Credential program called the Foundations of Commercial Equipment Finance. This program has already seen notable success, with Cheyney and Lincoln Universities each hosting two different groups and North Carolina Central University recently completing its first cohort.

In addition to these accomplishments, I had the opportunity to travel to the University of North Texas to speak about their upcoming course, which was developed in partnership with Michael Gallo. This course, built on the CLFP Handbook and Body of Knowledge, promises to be a valuable resource for students and aid in the movement to bring a younger generation into our industry.

A special mention goes to Leonard Lane, CLFP, whose dedication and effort brought our Handbook to life as an Audiobook. His contribution has made the material more accessible to a broader audience, and we extend our heartfelt thanks to him.

Recognizing some individuals' financial challenges, we established a scholarship fund to support those in need. This fund covers the cost of the book, class, exam, and/or annual dues, ensuring that financial hardship does not hinder one's pursuit of professional excellence.

We created a comprehensive, free study guide to aid our members in furthering their studies. This guide includes a 10-week study program, summaries of each chapter, and sample quiz questions, providing a structured and effective learning path.

Embracing technology to enhance our services, we added an AI Chatbot to our website. This feature efficiently fields inquiries and provides immediate assistance to our members and potential candidates, improving our overall user experience.

Our community continues to grow, and I am thrilled to announce that we added nearly 150 new CLFPs this year, bringing our total membership to close to 1,600. This milestone is a testament to our members' dedication and commitment to professional development and excellence in the field.

Lastly, we have introduced digital certificates for those who complete our micro-credential classes, become new CLFPs, and recertify as CLFPs. This initiative celebrates their achievements and allows recipients to share their successes.

As we look ahead, I am excited about the opportunities and challenges that await us. Together, we will continue to push the boundaries of innovation and excellence. Thank you for your unwavering support and dedication.

Happy Holidays,

Reid Raykovich, CLFP, CAE
CEO

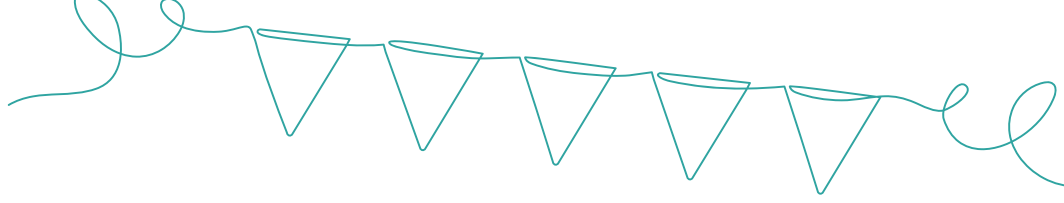


2024 CLFPS ADDED TO THE CLFP FAMILY

| | | | |
|----------------------------------|---|--|---|
| Shayan Adl, CLFP | <i>Dext Capital</i> | Jacob Crouch, CLFP | <i>The Huntington National Bank</i> |
| Jessica Anderson, CLFP | <i>U.S. Bank Equipment Finance</i> | Rebecca Crown, CLFP | <i>DLL</i> |
| Sandra Anderson, CLFP | <i>The Huntington National Bank</i> | James Currier, CLFP | <i>Finloc 2000 Inc.</i> |
| Kevin Angelo, CLFP | <i>Financial Partners Group</i> | Catherine Cuthbertson, CLFP | <i>North Mill Equipment Finance</i> |
| Ryan Bass, CLFP | <i>Navitas Credit Corp.</i> | Gillianne Daum, CLFP | <i>DLL</i> |
| Noah Beh, CLFP Associate | <i>Auxilior Capital Partners, Inc.</i> | Danielle DeGraeve, CLFP | <i>US Capital Corporation</i> |
| Jennifer Bell, CLFP | <i>AP Equipment Financing</i> | Massimo (Max) DeVellis, CLFP Associate | <i>EquipLoan</i> |
| Kelly Black-Swartz, CLFP | <i>First Citizens Bank Equipment Finance</i> | Marvel D'Souza, CLFP | |
| Justin Blumenstein, CLFP | <i>AP Equipment Financing</i> | Alex Ducharme, CLFP | <i>The Huntington National Bank</i> |
| Brooks Bocko, CLFP | <i>Dext Capital</i> | Frederick Duffield, CLFP | <i>DLL</i> |
| Benjamin (Leighton) Bost, CLFP | <i>Navitas Credit Corp.</i> | Alexander Erickson, CLFP | <i>Navitas Credit Corp.</i> |
| Heidi Brooks, CLFP | <i>DLL</i> | Aaron Fadness, CLFP | <i>Stearns Bank NA-Equipment Finance Division</i> |
| Rick Bruflat, CLFP | <i>John Deere Financial</i> | Elonzo Fairbanks, CLFP | <i>Auxilior Capital Partners, Inc.</i> |
| Justin Buhrow, CLFP | <i>360 Equipment Finance</i> | Graham Falde, CLFP | <i>U.S. Bank Equipment Finance</i> |
| Parker Bullard, CLFP | | Matthew Funke, CLFP | <i>DLL</i> |
| Colleen Bullock, CLFP | <i>DLL</i> | Michela Giannandrea, CLFP | <i>Auxilior Capital Partners, Inc.</i> |
| Lisa Burks, CLFP | <i>Equify Financial LLC</i> | DeAnna Goen, CLFP | <i>Navitas Credit Corp.</i> |
| Erin Burruto, CLFP Associate | <i>First American Equipment Finance, a City National Bank Company</i> | Dana Goldis, CLFP | |
| Timothy Campbell, CLFP Associate | <i>Auxilior Capital Partners, Inc.</i> | Wilfredo Gonzalez, CLFP | <i>DLL</i> |
| Roshanthi Cantin, CLFP | <i>Falcon Equipment Finance, a division of Falcon National Bank</i> | Shaakira Grant, CLFP | <i>First Citizens Bank Equipment Finance</i> |
| Adam Carl, CLFP | <i>Channel</i> | Eric Grieser, CLFP | <i>Gallagher</i> |
| Fatima Chin, CLFP | <i>DLL</i> | Kaitlyn Guidry, CLFP | <i>Financial Partners Group</i> |
| Jefferson Choi, CLFP | <i>Wintrust Specialty Finance</i> | Darren Habiger, CLFP | <i>Stearns Bank NA-Equipment Finance Division</i> |
| Emmet Clarke, CLFP | <i>Tokyo Century (USA) Inc.</i> | Barry Hart, CLFP | <i>Wintrust Specialty Finance</i> |
| Paula Cole, CLFP | <i>The Huntington National Bank</i> | Monica Hawk, CLFP | <i>North Mill Equipment Finance</i> |
| Jean Conran, CLFP | <i>DLL</i> | William Hedrick, CLFP | <i>DLL</i> |
| Lynne Cooney, CLFP | <i>DLL</i> | Amy Henrikson, CLFP | <i>The Huntington National Bank</i> |
| Nicholas Crawford, CLFP | <i>Auxilior Capital Partners, Inc.</i> | | |

| | | | |
|---------------------------------|---|---|---|
| Justin Hersey, CLFP Associate | <i>First American Equipment Finance, a City National Bank Company</i> | Tessa-Marie Menees, CLFP | <i>Dext Capital</i> |
| Emilie Herter, CLFP | <i>DLL</i> | Stephanie Mergen, CLFP | <i>Stearns Bank NA-Equipment Finance Division</i> |
| Surbhi Holani, CLFP | <i>ECS Financial Services, Inc.</i> | Nathan Meyer, CLFP | <i>The Huntington National Bank</i> |
| Jason Hughes, CLFP | <i>Pathward</i> | Laura Morin, CLFP | <i>U.S. Bank Equipment Finance</i> |
| Alexander Hutchings, CLFP | <i>First American Equipment Finance, a City National Bank Company</i> | Brett Morris, CLFP | <i>Navitas Credit Corp.</i> |
| Paul Janson, CLFP | <i>DLL</i> | Adrene Moulton-Palmer, CLFP | <i>DLL</i> |
| Swinkey Jindal, CLFP | <i>DLL</i> | Jill Murphy, CLFP | <i>The Huntington National Bank</i> |
| Ridge Johnson, CLFP | <i>The Huntington National Bank</i> | Timothy Murphy, CLFP | <i>Machinery Partner</i> |
| Robert Johnson, CLFP | <i>Summit Funding Group, Inc.</i> | Conrad Nilsen, CLFP | <i>Dext Capital</i> |
| Mitchell Jurius, CLFP | <i>Full Skope LLC</i> | Regina Nirelli, CLFP | <i>OnPoint Capital, LLC</i> |
| Matthew Kilarski, CLFP | <i>First Citizens Bank Equipment Finance</i> | Daniel Nuss, CLFP | <i>U.S. Bank Equipment Finance</i> |
| Chelsea Knutson, CLFP Associate | <i>Channel</i> | Sarah Nyseth, CLFP | <i>U.S. Bank Equipment Finance</i> |
| Jeremy Koenen, CLFP | <i>Tamarack Technology, Inc.</i> | Amanda Nytes, CLFP | <i>Stearns Bank NA-Equipment Finance Division</i> |
| Michael Lazarz, CLFP | <i>CoreTech</i> | Daniel O'Connell, CLFP | <i>DLL</i> |
| Joshua LeClere, CLFP | <i>U.S. Bank Equipment Finance</i> | Oluwaseun (Daniel) Oyekanmi, CLFP Associate | <i>Element Fleet Management</i> |
| Dante Lockhart, CLFP | <i>Private Investment Fund</i> | Julie Paige, CLFP | <i>Navitas Credit Corp.</i> |
| Mackenzie Luft, CLFP | <i>DLL</i> | Ravi Patel, CLFP Associate | <i>DLL</i> |
| Kelly Lyon, CLFP | <i>First American Equipment Finance, a City National Bank Company</i> | Kinna Pattani, CLFP | <i>Alfa Financial Software Inc</i> |
| Michelle MacCalman, CLFP | <i>Dext Capital</i> | Thanh Pham, CLFP | <i>Wintrust Specialty Finance</i> |
| Anthony Maddesi, CLFP | <i>DLL</i> | Jeremy Phillips, CLFP | <i>Wintrust Commercial Finance</i> |
| Todd Madson, CLFP | <i>The Huntington National Bank</i> | Melanie Phillips, CLFP | <i>First American Equipment Finance, a City National Bank Company</i> |
| Sasha Mata, CLFP | <i>360 Equipment Finance</i> | Neelima Piedy, CLFP | <i>DLL</i> |
| Adam McGinty, CLFP | <i>DLL</i> | Kandice Piel, CLFP | <i>DLL</i> |
| Michelle McKie, CLFP | <i>The Huntington National Bank</i> | Nicholas Pierandri, CLFP | <i>First American Equipment Finance, a City National Bank Company</i> |
| Philip McNamara, CLFP | <i>Regions Equipment Finance Corporation</i> | Sharon Pietras, CLFP | <i>The Huntington National Bank</i> |
| Kenneth (Matt) Meier, CLFP | <i>Great American Insurance</i> | Dylan Porter, CLFP | <i>Channel</i> |

| | | | |
|----------------------------------|---|----------------------------|---|
| Daniel Presciutti, CLFP | <i>First American Equipment Finance, a City National Bank Company</i> | Tracy Stevens, CLFP | <i>DLL</i> |
| Molly Pulito, CLFP | <i>First American Equipment Finance, a City National Bank Company</i> | Katherine Sumner, CLFP | <i>The Huntington National Bank</i> |
| Kevin Rice, CLFP | <i>Financial Partners Group</i> | Mark Swearingen, CLFP | <i>Wintrust Commercial Finance</i> |
| Melissa Rice, CLFP | <i>Financial Partners Group</i> | Alexis Tauer, CLFP | <i>Channel</i> |
| Haley Richey, CLFP | <i>360 Equipment Finance</i> | Paul Tew, CLFP | <i>DLL</i> |
| Krystle Riggi, CLFP | <i>North Mill Equipment Finance</i> | Jacob Thomas, CLFP | <i>DLL</i> |
| Katie Riggs, CLFP | <i>Dext Capital Associate</i> | Brady Thompson, CLFP | <i>Stearns Bank NA-Equipment Finance Division</i> |
| Stephen Rodriguez, CLFP | <i>ROK Financial</i> | Emma Tickner, CLFP | <i>Falcon Equipment Finance, a division of Falcon National Bank</i> |
| Jasmine Rognrud, CLFP | <i>Channel Associate</i> | Kim Tieu, CLFP | <i>Dext Capital</i> |
| Anthony Ruggiere, CLFP | <i>Wintrust Commercial Finance</i> | Robert Tomlinson Jr., CLFP | <i>The Huntington National Bank</i> |
| Sebastian Salgado Gonzalez, CLFP | <i>Tokyo Century (USA) Inc.</i> | Andrea Tsao, CLFP | <i>First American Equipment Finance, a City National Bank Company Associate</i> |
| Carlos Santos, CLFP | <i>Commercial Equipment Finance, Inc.</i> | Karen Tworek, CLFP | <i>ECS Financial Services, Inc.</i> |
| William (Drew) Schilling, CLFP | <i>DLL</i> | Hannalora Van Nevel, CLFP | <i>U.S. Bank Equipment Finance</i> |
| Anthony Schindell, CLFP | <i>Trio Capital Solutions</i> | Nimisha Varghese, CLFP | <i>ECS Financial Services, Inc.</i> |
| Jahnise Schneider, CLFP | <i>The Huntington National Bank</i> | Michelle Verra, CLFP | <i>DLL</i> |
| Eric Scott, CLFP | <i>Navitas Credit Corp.</i> | Justin Villard, CLFP | <i>First Western Equipment Finance</i> |
| James-Thomas Scott, CLFP | <i>Stearns Bank NA-Equipment Finance Division</i> | Justin Voss, CLFP | <i>DLL</i> |
| Jessica See, CLFP | <i>DLL</i> | Hoc Vu, CLFP | <i>Channel</i> |
| Alexander Seebaugh, CLFP | <i>360 Equipment Finance</i> | Prashanth Vyamasani, CLFP | <i>DLL</i> |
| Sahil Sharma, CLFP | <i>Rosenthal & Rosenthal, Inc.</i> | Madison Walley, CLFP | <i>DLL</i> |
| Danielle Shields, CLFP | <i>Fulcrum Technologies, Inc. Associate</i> | Eric Weber, CLFP | <i>North Mill Equipment Finance</i> |
| Nicholas Shotwell, CLFP | <i>First American Equipment Finance, a City National Bank Company</i> | Amber Wellhoefer, CLFP | <i>The Huntington National Bank</i> |
| Adam Shuman, CLFP | <i>First Citizens Bank Equipment Finance</i> | Lana Wensman, CLFP | <i>Stearns Bank NA-Equipment Finance Division</i> |
| Annette Simmons, CLFP | <i>Equify Financial LLC</i> | Amy Weum, CLFP | <i>CoBank Farm Credit Leasing</i> |
| Kevin Smallwood, CLFP | <i>DLL</i> | Mary Wheeler, CLFP | <i>Navitas Credit Corp.</i> |
| Ryan Steger, CLFP | <i>DLL</i> | David Williams, CLFP | <i>FIS</i> |
| | | Jenna Yeagle, CLFP | <i>DLL</i> |



CLFP FOUNDATION SURPASSES 1,500 MEMBERS

The Certified Lease & Finance Professional (CLFP) Foundation reached a new milestone of 1,500 members in May of this year. The CLFP Board of Directors is pleased to announce the 1,500th CLFP is Sharon Pietras of Huntington National Bank.

“The milestone is such an achievement for the Foundation, as I am one of many that contributed to this experience,” shares Pietras.

Sharon attended an Academy for Lease & Finance Professionals (ALFP) with a cohort of teammates from Huntington National Bank in mid-May. When asked about her experience and preparation for the ALFP and CLFP Exam, she said, “Before the Academy, our Huntington cohort spent weeks together [preparing]. The Huntington CLFP leaders - Andrea Schmid, Paul Knowlton, and Mike Gregan - spearheaded weekly review sessions with guest Huntington CLFP alumni who each gave us their unique perspectives on the subject matter we were studying that week. It was the best part of the whole experience; we felt like we were in it together.”

“The best encouragement I can give a new CLFP candidate is the same encouragement I received: ‘Trust the process and trust yourself,’” shares Pietras. “There will certainly be some concepts or chapters in the Body of Knowledge that may be harder for you, or perhaps all of it feels like completely new territory. Each piece of knowledge or learned skill is a step in the right direction. So, enjoy the journey and reward yourself for taking the first steps.”

Mel Vinson, VP of Marketing and Development at the CLFP Foundation shares, “To see the camaraderie, support, and teamwork across the many ALFPs has been inspiring. To reach the 1,500-member mark and see our CLFP Family continuing to grow daily is incredible. I am deeply grateful for the individuals, companies, and CLFPs prioritizing our mission of building a better commercial equipment leasing and finance industry.”

“One consistent theme I saw in action during my CLFP Journey was the spirit of giving,” says Pietras. “From my classmates, Huntington leadership, and CLFP leaders, it was evident that CLFP is all about giving of ourselves to help our colleagues, our industry, and the next generation of candidates. I am happy to be a support for future CLFPs while continuing to learn and gain experience in the industry. We’re all better tomorrow when each of us is better today.”



CLFP FOUNDATION CELEBRATES CLFP DAY: Naming Leonard Lane the 2024 Cindy Spurdle Award of Excellence Winner and Announcing Newest Larry LaChance Lifetime Award Members

On October 10, 2024, Certified Lease & Finance Professionals (CLFPs) celebrated CLFP Day with in-person events and a virtual toast, recognizing the achievements of the global CLFP Family. This annual celebration also marks the announcement of the prestigious Cindy Spurdle Award of Excellence, created in 2012 to honor the CLFP who has made significant contributions to the equipment finance industry and best embodies the CLFP ideals.

The CLFP Foundation proudly announced Leonard Lane, CLFP, as the 2024 Cindy Spurdle Award winner. Lane, Senior Vice President of Product Management at Odessa, reflects on his path toward earning the CLFP designation and the professional growth that followed.

“I’d toyed with pursuing the CLFP designation for several years (I have every edition of the CLFP Handbook from the sixth edition onward!),” Lane shares. “But in 2020, I realized how much value and credibility being a CLFP would add to my role at Odessa.”

“Besides investing 20 years in developing Odessa’s product and platform, I believe my most significant contribution to our industry is through my CLFP volunteer work,” Lane says, citing his role as an instructor for multiple Academies for Lease & Finance Professionals (ALFPs) and involvement with Historically Black Colleges and Universities (HBCUs). “Hands down, my favorite part of being involved with the CLFP Foundation is teaching classes. It’s a great opportunity to help candidates prepare for the Exam and introduce our industry to the next generation.”

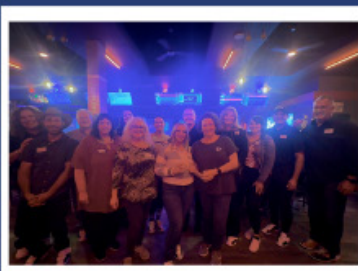
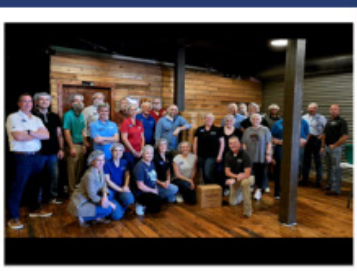
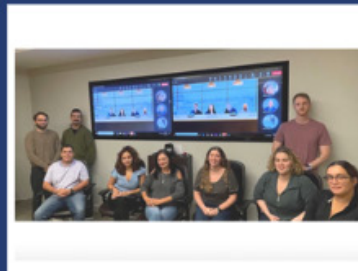
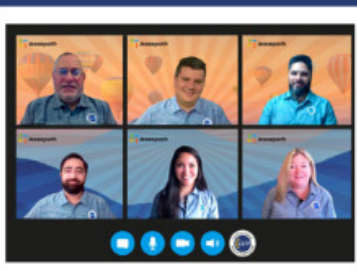
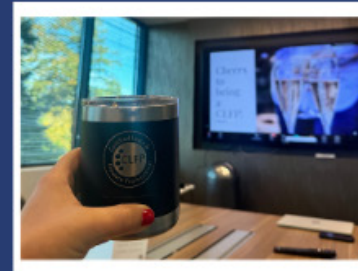
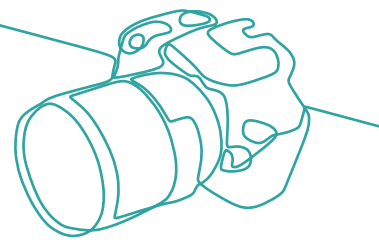
Lane concludes with a heartfelt expression of gratitude. “I am very honored to receive this award, and I am grateful to Reid, Mel, and the Board of Directors for the many opportunities they’ve opened for me to give back to the industry that’s been so good to me for 32 years now. Thank you!”



The CLFP Foundation is also eager to announce that Nancy Geary, CLFP, and Steve Crane, CLFP, were honored with the Larry LaChance Lifetime Member Awards during CLFP Day. The award was created in 2022 to honor those who contributed significantly to the Foundation and remained involved throughout retirement.”

The award was created in 2022 to honor those who contributed significantly to the Foundation and remained involved throughout retirement. In 2023, the award was renamed the Larry LaChance Lifetime Member Award, in honor of late long-time CLFP and Board Member, Larry LaChance. Nominees were submitted by Foundation Board members and then voted on by the entire Board.

CLFP DAY CELEBRATION PHOTOS



ALFP 2024 RECAP

Thank you to our ALFP Instructors!

Andy Belliveau, CPA, CLFP
Ann Erikson, CPA, CLFP
Ben Wendt, CLFP
Candace Reinhart, CLFP
Craig Colling, CLFP
Dan Canine
Dave Gernhard, CLFP
Elizabeth Verhoef, CLFP
Greg Pabich, CLFP
Jack Elenbaas, CLFP
Jill Molitor, CLFP
Kathy Nordendahl, CLFP
Keara Piekanski, CLFP,
Lia Wax, CLFP
Leonard Lane, CLFP
Mark Thomas, CLFP
Megan Bystol-Olvera, CLFP
Melanie Rudiger, CLFP
Mel Vinson, CLFP
Mike Cohen, CLFP
Mike Renfro, CLFP
Molly Simon, CLFP
Paul Knowlton, CLFP
Reid Raykovich, CLFP, CAE
Todd Buzard, CPA, CLFP

THANK YOU, ALFP INSTRUCTORS!



Thank you, CLFP Mentors!

Albert Royale, CLFP
Alex Ducharme, CLFP
Alyse White-Hayes, CLFP
Aparna Vemuri, CLFP
Brandon Lairsen, CLFP
Conrad Nilsen, CLFP
Craig Colling, CLFP
Darren Sholes, CLFP
Elizabeth Verhoef, CLFP
Freddy Jalivand, CLFP
Ian Steidel, CLFP
Jack Elenbaas, CLFP
Jasmine Rongrud, CLFP
Kathy Massey, CLFP
Kristin Maher, CLFP
Lana Kralik, CLFP
Lauren Baingo, CLFP
Lexie Dressman, CLFP
Michael Schober, CLFP
Mike Baez, CLFP
Monica Hawk, CLFP
Nick Ross, CLFP
Rebecca Ricci, CLFP
Regina Nirelli, CLFP
Rick Bruflat, CLFP
Rico Sondakh-Dorantes, CLFP
Ryan Flores, CLFP
Stacey Widom, CLFP
Stephanie Langford, CLFP
Tiffany Vraa, CLFP
Tim Appleget, CLFP
Tracey Elfering, CLFP
Wendy Dixon, CLFP
Will Thomsen, CLFP

THANK YOU, CLFP MENTORS



ALFP 2024 RECAP

Thank you to our ALFP Hosts!



COMPANIES WITH 3 OR MORE CLFPS

| 2023 Rank | 2024 Rank | Company | 2024 # of CLFPs | 2023 # of CLFPs | Change in # of CLFPs |
|-----------|-----------|--|-----------------|-----------------|----------------------|
| 1 | 1 | First American Equipment Finance, a City National Bank Company | 157 | 142 | 11% |
| 2 | 2 | DLL | 112 | 82 | 37% |
| 3 | 3 | U.S. Bank Equipment Finance | 66 | 66 | 0% |
| 4 | 4 | The Huntington National Bank | 60 | 48 | 25% |
| 6 | 5 | Stearns Bank NA-Equipment Finance Division | 48 | 38 | 26% |
| 4 | 6 | Ascentium Capital LLC | 40 | 48 | -17% |
| 7 | 7 | Arvest Equipment Finance | 36 | 36 | 0% |
| 8 | 8 | Amur Equipment Finance | 33 | 35 | -6% |
| 11 | 9 | AP Equipment Financing | 32 | 29 | 10% |
| 11 | 10 | Channel | 30 | 29 | 3% |
| 9 | 10 | Oakmont Capital Holdings, LLC | 30 | 32 | -6% |
| 10 | 12 | Key Equipment Finance | 27 | 31 | -13% |
| 14 | 13 | First Citizens Bank Equipment Finance | 26 | 26 | 0% |
| 15 | 13 | North Mill Equipment Finance | 26 | 21 | 24% |
| 13 | 15 | Financial Pacific Leasing, Inc., an Umpqua Bank Company | 24 | 28 | -14% |
| 21 | 16 | Navitas Credit Corp. | 21 | 14 | 50% |
| 16 | 17 | KLC Financial, Inc. | 20 | 19 | 5% |
| 18 | 18 | ECS Financial Services, Inc. | 18 | 16 | 13% |
| 16 | 18 | GreatAmerica Financial Services | 18 | 19 | -5% |
| 25 | 18 | Wintrust | 18 | 11 | 64% |
| 22 | 21 | Northland Capital Financial Services, LLC | 15 | 13 | 15% |
| 20 | 21 | Stryker | 15 | 15 | 0% |
| 18 | 23 | Odessa | 13 | 16 | -19% |
| 24 | 24 | Ivory Consulting Corporation | 12 | 12 | 0% |
| 50 | 25 | Auxilior Capital Partners, Inc. | 11 | 5 | 120% |
| 22 | 25 | Orion First Financial LLC | 11 | 13 | -15% |
| 31 | 25 | Tokyo Century (USA) Inc. | 11 | 9 | 22% |
| 31 | 28 | Alliance Funding Group | 10 | 9 | 11% |
| 25 | 28 | Beacon Funding Corporation | 10 | 11 | -9% |
| 25 | 28 | Cadence Bank | 10 | 11 | -9% |
| 28 | 28 | Fleet Advantage, LLC | 10 | 10 | 0% |
| 31 | 28 | Great American Insurance | 10 | 9 | 11% |
| 28 | 33 | 1st Source Bank | 9 | 10 | -10% |
| 64 | 33 | Dext Capital | 9 | 3 | 200% |
| 41 | 33 | LTi Technology Solutions | 9 | 7 | 29% |
| 31 | 33 | Solifi | 9 | 9 | 0% |

| 2023 Rank | 2024 Rank | Company | 2024 # of CLFPs | 2023 # of CLFPs | Change in # of CLFPs |
|-----------|-----------|--|-----------------|-----------------|----------------------|
| 40 | 33 | Tamarack Technology, Inc. | 9 | 8 | 13% |
| 31 | 33 | Taycor Financial | 9 | 9 | 0% |
| 31 | 33 | Transport Enterprise Leasing LLC | 9 | 9 | 0% |
| 38 | 40 | BMO | 8 | 8 | 0% |
| 41 | 40 | Commercial Equipment Finance, Inc. | 8 | 7 | 14% |
| 31 | 42 | Canon Financial Services, Inc. | 7 | 9 | -22% |
| 41 | 42 | Crossroads Equipment Lease & Finance LLC | 7 | 7 | 0% |
| 50 | 42 | FIS | 7 | 5 | 40% |
| 55 | 45 | FinWise Bank | 6 | 4 | 50% |
| 46 | 45 | Leasepath | 6 | 6 | 0% |
| 55 | 45 | Mitsubishi HC Capital America, Inc. | 6 | 4 | 50% |
| 28 | 45 | Quality Equipment Finance | 6 | 10 | -40% |
| n/a | 49 | 360 Equipment Finance* | 5 | 2 | 150% |
| 64 | 49 | Balboa Capital a Division of Ameris Bank | 5 | 3 | 67% |
| 46 | 49 | Cisco Systems Capital Corporation | 5 | 6 | -17% |
| 41 | 49 | Civista Leasing and Finance | 5 | 7 | -29% |
| 55 | 49 | Falcon Equipment Finance, a division of Falcon National Bank | 5 | 4 | 25% |
| 55 | 49 | LEAF Commercial Capital Inc. | 5 | 4 | 25% |
| 50 | 49 | Nexseer Capital | 5 | 5 | 0% |
| 50 | 49 | Univest Capital, Inc. | 5 | 5 | 0% |
| 64 | 57 | APEX Commercial Capital Corp. | 4 | 3 | 33% |
| 55 | 57 | Commercial Capital Company, LLC | 4 | 4 | 0% |
| 46 | 57 | CoreTech Leasing, Inc. | 4 | 6 | -33% |
| n/a | 57 | Financial Partners Group* | 4 | 0 | n/a |
| 46 | 57 | First Commonwealth Bank | 4 | 6 | -33% |
| n/a | 57 | M&T Bank* | 4 | 2 | 100% |
| 64 | 57 | MAZO Capital Solutions | 4 | 3 | 33% |
| 64 | 57 | Northteq, Inc. | 4 | 3 | 33% |
| n/a | 57 | PEAC Solutions* | 4 | 1 | 300% |
| n/a | 57 | Ten Oaks Commercial Capital* | 4 | 0 | n/a |
| n/a | 57 | The Alta Group* | 4 | 2 | 100% |
| 41 | 57 | Truist | 4 | 7 | -43% |
| 55 | 57 | UniFi Equipment Finance, Inc. | 4 | 4 | 0% |
| 55 | 57 | Western Equipment Finance | 4 | 4 | 0% |
| 64 | 71 | Commerce Bank | 3 | 3 | 0% |
| 64 | 71 | Element Fleet Management | 3 | 3 | 0% |
| 64 | 71 | Fifth Third Bank | 3 | 3 | 0% |
| 55 | 71 | Hanmi Bank | 3 | 4 | -25% |

| 2023 Rank | 2024 Rank | Company | 2024 # of CLFPs | 2023 # of CLFPs | Change in # of CLFPs |
|-----------|-----------|-------------------------------|-----------------|-----------------|----------------------|
| n/a | 71 | John Deere Financial* | 3 | 2 | 50% |
| n/a | 71 | Lion Technology Finance, LLC* | 3 | 2 | 50% |
| 64 | 71 | NCMIC Finance Corporation | 3 | 3 | 0% |
| n/a | 71 | OnPoint Capital, LLC* | 3 | 1 | 200% |
| 64 | 71 | QuickFi by Innovation Finance | 3 | 3 | 0% |
| 64 | 71 | TD Equipment Finance, Inc. | 3 | 3 | 0% |
| n/a | 71 | Verdant Commercial Capital* | 3 | 2 | 50% |

*Denotes new to the list

First Foundation Bank, Mileston Bank, and Siemens Financial Services dropped off

NEW CLFPS AND ASSOCIATES



Shayan Adl, CLFP



Jessica Anderson, CLFP



Sandra Anderson, CLFP



Kevin Angelo, CLFP



Ryan Bass, CLFP



Noah Beh, CLFP Associate



Jennifer Bell, CLFP



Kelly Black-Swartz, CLFP



Justin Blumenstein, CLFP



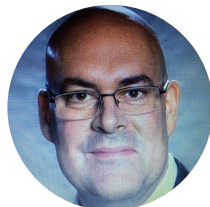
Brooks Bock, CLFP



Benjamin (Leighton) Bost, CLFP



Heidi Brooks, CLFP



Rick Bruflat, CLFP



Justin Buhrow, CLFP



Parker Bullard, CLFP



Colleen Bullock, CLFP



Lisa Burks, CLFP



Erin Burruto, CLFP Associate



Timothy Campbell, CLFP Associate



Roshanthi Cantin, CLFP



Adam Carl, CLFP



Fatima Chin, CLFP



Jefferson Choi,
CLFP



Emmet Clarke, CLFP



Paula Cole, CLFP



Jean Conran, CLFP



Lynne Cooney, CLFP



Nicholas Crawford,
CLFP



Jacob Crouch, CLFP



Rebecca Crown,
CLFP



James Currier, CLFP



Catherine
Cuthbertson, CLFP



Gillianne Daum,
CLFP



Danielle DeGraeve,
CLFP



Massimo (Max)
DeVellis, CLFP
Associate



Marvel D'Souza,
CLFP



Alex Ducharme,
CLFP



Frederick Duffield,
CLFP



Alexander Erickson,
CLFP



Aaron Fadness,
CLFP



Elonzo Fairbanks,
CLFP



Graham Falde, CLFP



Matthew Funke,
CLFP



Michela
Giannandrea, CLFP



DeAnna Goen, CLFP



Dana Goldis, CLFP



Wilfredo Gonzalez,
CLFP



Shaakira Grant,
CLFP



Eric Grieser, CLFP



Kaitlyn Guidry,
CLFP



Darren Habiger,
CLFP



Barry Hart, CLFP



Monica Hawk, CLFP



William Hedrick,
CLFP



Amy Henrikson,
CLFP



Justin Hersey, CLFP
Associate



Emilie Herter, CLFP



Surbhi Holani, CLFP



Jason Hughes, CLFP



Alexander
Hutchings, CLFP



Paul Janson, CLFP



Swinkey Jindal,
CLFP



Ridge Johnson,
CLFP



Robert Johnson,
CLFP



Mitchell Jurius,
CLFP



Matthew Kilarski,
CLFP



Chelsea Knutson,
CLFP Associate



Jeremy Koenen,
CLFP



Michael Lazarz,
CLFP



Joshua LeClere,
CLFP



Dante Lockhart,
CLFP



Mackenzie Luft,
CLFP



Kelly Lyon, CLFP



Michelle
MacCalman, CLFP



Anthony Maddesi,
CLFP



Todd Madson, CLFP



Sasha Mata, CLFP



Adam McGinty,
CLFP



Michelle McKie,
CLFP



Philip McNamara,
CLFP



Kenneth (Matt)
Meier, CLFP



Tessa-Marie
Menees, CLFP



Stephanie Mergen,
CLFP



Nathan Meyer, CLFP



Laura Morin, CLFP



Brett Morris, CLFP



Adrene Moulton-
Palmer, CLFP



Jill Murphy, CLFP



Timothy Murphy,
CLFP



Conrad Nilsen,
CLFP



Regina Nirelli, CLFP



Daniel Nuss, CLFP



Sarah Nyseth, CLFP



Amanda Nytes,
CLFP



Daniel O'Connell,
CLFP



Oluwaseun (Daniel)
Oyekanmi, CLFP
Associate



Julie Paige, CLFP



Ravi Patel, CLFP
Associate



Kinna Pattani, CLFP



Thanh Pham, CLFP



Jeremy Phillips,
CLFP



Melanie Phillips,
CLFP



Neelima Piedy,
CLFP



Kandice Piel, CLFP



Nicholas Pierandri,
CLFP



Sharon Pietras,
CLFP



Dylan Porter, CLFP



Daniel Presciutti,
CLFP



Molly Pulito, CLFP



Kevin Rice, CLFP



Melissa Rice, CLFP



Haley Richey, CLFP



Krystle Riggi, CLFP



Katie Riggs, CLFP
Associate



Stephen Rodriguez,
CLFP



Jasmine Rognrud,
CLFP Associate



Anthony Ruggiere,
CLFP



Sebastian Salgado
Gonzalez, CLFP



Carlos Santos, CLFP



William (Drew)
Schilling, CLFP



Anthony Schindell,
CLFP



Jahnise Schneider,
CLFP



Eric Scott, CLFP



James-Thomas
Scott, CLFP



Jessica See, CLFP



Alexander
Seebaugh, CLFP



Sahil Sharma, CLFP



Danielle Shields,
CLFP Associate



Nicholas Shotwell,
CLFP



Adam Shuman,
CLFP



Annette Simmons,
CLFP



Kevin Smallwood,
CLFP



Ryan Steger, CLFP



Tracy Stevens, CLFP



Katherine Sumner,
CLFP



Mark Swearingen,
CLFP



Alexis Tauer, CLFP



Paul Tew, CLFP



Jacob Thomas, CLFP



Brady Thompson,
CLFP



Emma Tickner,
CLFP



Kim Tieu, CLFP



Robert Tomlinson
Jr., CLFP



Andrea Tsao, CLFP
Associate



Karen Tworek, CLFP



Hannalora Van
Nevel, CLFP



Nimisha Varghese,
CLFP



Michelle Verra,
CLFP



Justin Villard, CLFP



Justin Voss, CLFP



Hoc Vu, CLFP



Prashanth
Vyamasani, CLFP



Madison Walley,
CLFP



Eric Weber, CLFP



Amber Wellhoefer,
CLFP



Lana Wensman,
CLFP



Amy Weum, CLFP



Mary Wheeler, CLFP



David Williams,
CLFP



Jenna Yeagle, CLFP

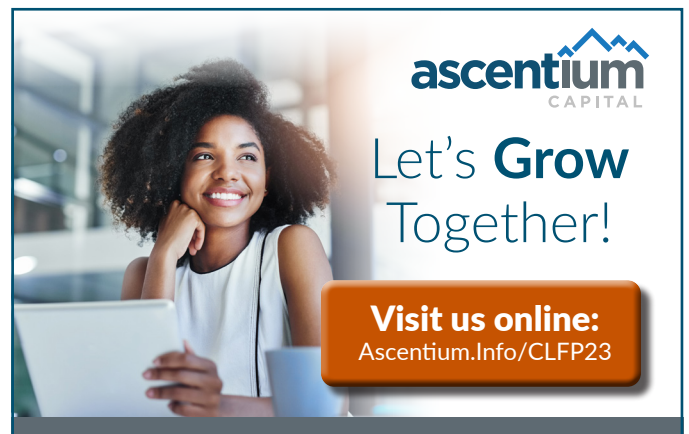
THANK YOU, AMBASSADORS!

| | | | |
|-------------------------------|--|-----------------------------|-------------------------------|
| Karen King | 1st Source | Jacquie Cripe, CLFP | Mitsubishi HC Capital |
| Haley Richey, CLFP | 360 Equipment Finance | Sean Cokeley, CLFP | <i>Navitas</i> |
| Brent Hall, CLFP | AFG | Angie Landers, CLFP | Nexseer Capital |
| Laurie Stratman | Amur | Kristin Maher, CLFP | North Mill EF |
| Cori Miller, CLFP | AP Equipment Financing | Greg Pabich, CLFP | Northland Capital |
| Jenaleigh (Jen) Lathrop, CLFP | Arvest | Tracey Elfering, CLFP | Oakmont |
| Craig Colling, CLFP | Ascentium Capital | DelRoy Stauffer, CLFP | Odessa |
| Randy Montrose, CLFP | Auxilior Capital Partners | Terry Wood, CLFP | <i>Orion First Financial</i> |
| Aaron Massie, CLFP | <i>Beacon Funding</i> | Paul Fogle, CLFP | Quality Leasing Co |
| Jason Seitz, CLFP | BMO Harris | Steve Caulder, CLFP | Solifi |
| Lori Dean, CLFP | Cadence Bank | Michelle Fuchs, CLFP | Stearns Bank |
| Lori Kline, CLFP | Canon | Melissa McCuaig, CLFP | Stryker |
| Olga Seijo, CLFP | CEFI (Commercial Equipment Finance Inc) | Kevin Gjersvig, CLFP | Tamarack |
| Marley Clark, CLFP | Channel | Andrew Berkovitz, CLFP | Taycor Financial |
| Kevin Canepa, CLFP | Civista Leasing and Finance | Dave Gernhard, CLFP | TEL |
| Amy Hall, CLFP | CoreTech | Adam Ramirez, CLFP | Tokyo Century |
| Suzann Fakhoury, CLFP | <i>Crossroads EF</i> | Marilyn Tacka, CLFP | Truist |
| Conrad Nilsen, CLFP | Dext Capital | Rico Sondakh-Dorantes, CLFP | UniFi Equipment Finance, Inc. |
| Lexie Dressman, CLFP | DLL | Joan Twigg, CLFP | Univest |
| Tobey Wilson, CLFP | ECS | Melissa Kaul, CLFP | US Bank Equipment Finance |
| Jen Stich, CLFP | <i>Falcon Equipment Finance</i> | Mark McKissick, CLFP | Wintrust |
| Kristi Serrano, CLFP | Financial Pacific Leasing | | |
| Lauren Timlin, CLFP | Finwise | | |
| Todd Buzard, CLFP | First American Equipment Finance | | |
| Ben Wendt, CLFP | First Citizens Bank EF | | |
| Lynn Deitrick, CLFP | First Commonwealth Bank | | |
| Cheryl Hanson, CLFP | FIS | | |
| Marc Gingold, CLFP | FleetAdvantage | | |
| Mike Renfro, CLFP | <i>GAIG (Great American Insurance Group)</i> | | |
| Tawnya Stone, CLFP | GreatAmerica | | |
| Andrea Schmid, CLFP | Huntington | | |
| Martin Klotzman, CLFP | Ivory | | |
| Robin Van Lant | Key Bank | | |
| Lesley Farmer, CLFP | <i>KLC</i> | | |
| Michelle Speranza, CLFP | LEAF Commercial Capital | | |
| Vanessa Roberts, CLFP | Leasepath | | |
| Alex Bryson, CLFP | LTi Technology Solutions | | |

**THANK YOU TO
OUR PARTNERS!**



ARVEST[®]
EQUIPMENT FINANCE



A·P EQUIPMENT FINANCING

Partners in Equipment Financing & Leasing for over 20 years!

Just entered into my 8 or 9th contract with AP! In short, great team, from Sales, to Finance, to customer service!

★★★★★ - Google Reviews

CALL US AT
1-800-604-4817

www.apfinancing.com

 We are proud supporters of the CLFP Foundation


IVORY SUPERTRUMP

Make Modeling & Pricing
Sophisticated Leases and
Loans Intuitive

Let's chat (925) 926-1100
www.ivorycc.com

 Proud Supporters of the CLFP Foundation

JOB SEARCHING CLFP?
DON'T FORGET TO CHECK ORION FIRST!

At its core, Orion is a manager of risk - so if you're looking to make a low-risk, high-reward career decision visit orionfirst.com/careers for current job openings.

**SERVING THOSE WHO
FUND SMALL BUSINESS**

ORION FIRST

Proud supporter
of the **CLFP**
Foundation.



bmoharris.com/equipmentfinance

nôrthteq

**DOC'D, E-SIGNED,
DELIVERED –
THE DEAL'S YOURS.**

- loan origination system
- partner portal
- turnkey salesforce apps



SCHEDULE
DEMO

salesforce

powered

Building a better
equipment finance
industry.



FIRST AMERICAN
AN RBC/CITY NATIONAL COMPANY

PROUD SUPPORTER
CLFP FOUNDATION
faef.com

29 CLFP's
and Counting...



www.OakmontFinance.com

Work with
Certified Lease & Finance Professionals
who share your passion for the
lease and finance industry.

GAIG.com/SpecialtyEquipment
866.676.5677
SpecialtyEquipment@GAIG.com



© 2023 Great American Insurance Company, 301 E. Fourth St., Cincinnati, OH 45202

**Less work,
more flow**

Automate your asset finance business
processes end to end - you control how you
work on the Odessa Platform.

Learn more

odessa



**PERFORMANCE
DRIVEN BY
OPTIMIZATION**
THE TRUSTED CHOICE
OF TOP
MONITOR-RANKED
FINANCIAL INSTITUTIONS

LTiSolutions.com | +1 (402) 493-3445

THE FUNDING SOURCE OF CHOICE FOR BROKERS SINCE 1982



PAWNEE
LEASING CORPORATION

a Chesswood Group Limited company



800 864 4266 | Fax 970 482 2666



Info@PawneeLeasing.com



www.PawneeLeasing.com

Drive digital
transformation
with automation

TamarackTM

Guiding financial innovation

Tamarack.ai

888 952 8268

Discover@Tamarack.ai



TomorrowZone.io/CLFP

THANK YOU TO OUR 2024 CORPORATE PARTNERS

PLATINUM \$2500

AP Equipment Financing
Ascentium Capital
Channel
DLL
ECS Financial Services
Financial Pacific Leasing
First American Equipment Finance
Great American Insurance Group, Specialty
Equipment
LTi Technology Solutions
North Mill Equipment Finance
Northteq
Orion First Financial
Wintrust Specialty Finance

GOLD \$1750

Stearns Bank N.A.
Tamarack Technology, Inc.

SILVER \$1150

Amur
Arvest Equipment Finance
BMO's Equipment Finance Division
Oakmont Capital Services

BRONZE \$500

American Association of Commercial Finance
Brokers (AACFB)
Alliance Funding Group
Equipment Finance Cares
Ivory Consulting Corporation
TomorrowZone

THANK YOU TO OUR 2024 INDIVIDUAL PARTNERS

BENEFACTOR \$250+

Kip Amstutz, CLFP
Katie Baker, CLFP
Andy Belliveau, CLFP
Rob Boyer, CLFP
Donnie Bunn, CLFP
Paul Burnham, CLFP
Bud Callahan, CLFP
Tina Cartwright, CLFP
Andrew Clark, CLFP
Craig Colling, CLFP
Mike Coon, CLFP
Jeff Elliott, CLFP
Paul Fogle, CLFP
Lisa Genereux, CLFP
Nick Gibbens, CLFP
Ben Hall, CLFP
Steve Hanneman, CLFP
Jaimie Haver, CLFP
Adrian Hebig, CLFP
Janet Jonas, CLFP
Jaime Kaneshina, CLFP
Ray Lavin, CLFP
Joe Leonard, CLFP
Shari Lipski, CLFP
Toby McDonough, CLFP
Mic Mount, CLFP
Katie O'Mara, CLFP
John Pfister, CLFP
Kevin Prykull, CLFP
Carrie Radloff, CLFP
Reid Raykovich, CLFP
Deb Reuben, CLFP
Bob Rinaldi, CLFP
Pete Sawyer, CLFP
Guy Selinka, CLFP
Marci Slagle, CLFP
Amy Spragg, CLFP
Spencer Thomas, CLFP
Chris Williams, CLFP
Tobey Wilson, CLFP
Bruce Winter, CLFP
Terry Wood, CLFP

SPONSOR \$100 - \$249

Bob Bell, CLFP
Shannah Berger, CLFP
Patty Boehl, CLFP
Joe Brown, CLFP
Eric Bunnell, CLFP
Donna Christensen, CLFP
Sheila Coyle, CLFP
Lynn Deitrick, CLFP
Tracey Elfering, CLFP
Ron Elwood, CLFP

Cindy Fleck, CLFP
John Freeman, CLFP
David Gernhard, CLFP
Keith Hachey, CLFP
Cheryl Hanson, CLFP
Katharine Harris, CLFP
Robert Harris, CLFP
Tim Kehoe, CLFP
Paul Knowlton, CLFP
Vince Knowlton, CLFP
Andrew Mallinger, CLFP
Eric Mandella, CLFP
Zack Marsh, CLFP
Mark McKissick, CLFP
Tim Miller, CLFP
Kathy Nordendahl, CLFP
Brent Russell, CLFP
Chris Santy, CLFP
Mark Schrews, CLFP
Ron Schutz, CLFP
Will Thomsen, CLFP
Josh Utke, CLFP
Dave Verkinderen, CLFP
Mel Vinson, CLFP
Carl Villella, CLFP
Janeen Waddell, CLFP
Annette Watkins-Harris, CLFP
Lisa Whitehead, CLFP
Armando Yopez, CLFP

SUPPORTER \$50 - \$99

Mike Baez, CLFP
Kevin Canepa, CLFP
Neil Clark, CLFP
Skylar Crane, CLFP
Paul Crnkovic, CLFP
Jake Cutler, CLFP
Tina Eickhoff, CLFP
Joe Franco, CLFP
Steve Geller, CLFP
Amy Hall, CLFP
John Harders, CLFP
Mike Helder, CLFP
Nate Kary, CLFP
Stephanie Langford, CLFP
Tom Lockhart, CLFP
Connor Means, CLFP
Andrew Mellon, CLFP
Randy Montrose, CLFP
Patrick O'Connor, CLFP
Sam Oliva, CLFP
Mae Philpott, CLFP
Colin Rosenmeyer, CLFP
Joe Sclafani, CLFP
Alex Shields, CLFP

Molly Simon, CLFP
Justin Wilmes, CLFP

CONTRIBUTOR \$25 - \$49

Daniel Callahan, CLFP
Dean Ceglia, CLFP
Tony Cimino, CLFP
Andre Clifford, CLFP
Martin Cowie, CLFP
Mike Davis, CLFP
Tonya DiGregorio, CLFP
Ryan Flores, CLFP
Derek Hardenbergh, CLFP
Scott Jankowski, CLFP
Roderick Knoll, CLFP
Ruth Martens, CLFP
Peter McCaffrey, CLFP
Amy Moffitt, CLFP
Jill Molitor, CLFP
Jason Peterson, CLFP
Mark Sheehan, CLFP
Kim Smith, CLFP
Kevin Vick, CLFP
Troy Vosberg, CLFP